

For Research Use Only

CoraLite®594 Mouse IgG1 Isotype Control (1F8D3)

Catalog Number:CL594-66360-1



Basic Information

Catalog Number:

CL594-66360-1

GenBank Accession Number:

GeneID (NCBI):

Purification Method:

Protein G purification

Size:

100ug, 200 ug/ml

Full Name:

CloneNo.:

1F8D3

Source:

Mouse

Excitation/Emission maxima
wavelengths:

588 nm / 604 nm

Isotype:

IgG1

Applications

Tested Applications:

FC

Species Specificity:

megathura crenulata

Background Information

This antibody is used as the isotype control of mouse IgG1 (Kappa). It can be used as the isotype control in Flow Cytometry, Immuno-Precipitation and other experiments. The immunogen of this antibody is Keyhole Limpet Hemocyanin (KLH).

Storage

Storage:

Store at 2-8°C. Avoid exposure to light. Stable for one year after shipment.

Storage Buffer:

PBS with 0.09% sodium azide and 0.5% BSA.

For technical support and original validation data for this product please contact:

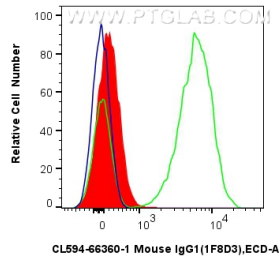
T: 4006900926

E: Proteintech-CN@ptglab.com

W: ptgcn.com

This product is exclusively available under Proteintech Group brand and is not available to purchase from any other manufacturer.

Selected Validation Data



1×10^6 human PBMCs were surface stained with 5 μ l CoraLite®594 Mouse IgG1 Isotype Control (1F8D3) (CL594-66360-1, Clone:1F8D3) (red), or CoraLite® Plus 594 Anti-Human CD3 (UCHT1) (CL594-65151, Clone: UCHT1) (green), or unstained (blue). Cells were not fixed. Lymphocytes were gated.