

For Research Use Only

# CoraLite®594-conjugated EPCAM/CD326 Monoclonal antibody

Catalog Number: CL594-66316

Featured Product



## Basic Information

Catalog Number:

CL594-66316

Concentration:

1000 ug/ml

Source:

Mouse

Isotype:

IgG2a

Immunogen Catalog Number:

AG15393

GenBank Accession Number:

BC014785

GeneID (NCBI):

4072

UNIPROT ID:

P16422

Full Name:

epithelial cell adhesion molecule

Calculated MW:

314 aa, 35 kDa

Observed MW:

35-40 kDa

Purification Method:

Protein A purification

CloneNo.:

2A2D5

Recommended Dilutions:

IF/ICC 1:50-1:500

Excitation/Emission maxima

wavelengths:

588 nm / 604 nm

## Applications

Tested Applications:

IF/ICC

Species Specificity:

human

Positive Controls:

IF/ICC : MCF-7 cells,

## Background Information

Epithelial cell adhesion molecule (EpCAM, CD326) is a type I transmembrane glycoprotein that functions as a homophilic, epithelial-specific intercellular cell-adhesion molecule. In addition to cell adhesion, EpCAM is also involved in cellular signaling, cell migration, proliferation, and differentiation. EpCAM is highly expressed on most carcinomas and therefore of potential use as a diagnostic and prognostic marker for a variety of carcinomas, and has become a therapeutic target. EpCAM may occur in distinct forms due to glycosylation. (PMID: 20837599; 19249674; 21576002; 22647938; 12691820)

## Storage

Storage:

Store at -20°C. Avoid exposure to light. Stable for one year after shipment.

Storage Buffer:

PBS with 50% glycerol, 0.05% Proclin300, 0.5% BSA, pH7.3

Aliquoting is unnecessary for -20°C storage

For technical support and original validation data for this product please contact:

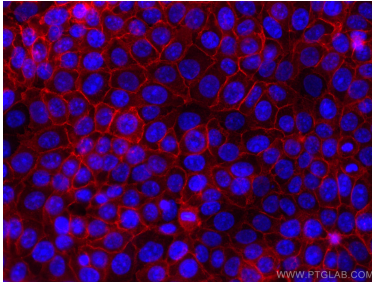
T: 4006900926

E: [Proteintech-CN@ptglab.com](mailto:Proteintech-CN@ptglab.com)

W: [ptgcn.com](http://ptgcn.com)

This product is exclusively available under Proteintech Group brand and is not available to purchase from any other manufacturer.

## Selected Validation Data



Immunofluorescent analysis of (-20°C Methanol)  
fixed MCF-7 cells using CoraLite®594  
EPCAM/CD326 antibody (CL594-66316, Clone:  
2A2D5 ) at dilution of 1:200.