

For Research Use Only

CoraLite®594-conjugated CHCHD2 Monoclonal antibody

Catalog Number: CL594-66302

Featured Product

2 Publications



Basic Information

Catalog Number:

CL594-66302

Source:

Mouse

Isotype:

IgG1

Immunogen Catalog Number:

AG24219

GenBank Accession Number:

BC003079

GeneID (NCBI):

51142

UNIPROT ID:

Q9Y6H1

Full Name:

coiled-coil-helix-coiled-coil-helix domain containing 2

Calculated MW:

151 aa, 16 kDa

Observed MW:

17 kDa

Purification Method:

Protein G purification

CloneNo.:

2G1G10

Recommended Dilutions:

IF/ICC: 1:50-1:500

Excitation/Emission maxima wavelengths:

588 nm / 604 nm

Applications

Tested Applications:

IF/ICC

Cited Applications:

IF

Species Specificity:

human, pig, rat

Cited Species:

human

Positive Controls:

IF/ICC : HepG2 cells,

Background Information

CHCHD2 is a widely expressed 17 kDa mitochondrion-localized protein. CHCHD2 contains a C-terminal CHCH (coiled-coil helix coiled-coil helix) domain. The function of the CHCH domain is not well understood, and the few characterized proteins that harbor this domain have diverse functions. Mutations in CHCHD2 gene have been reported in autosomal dominant Parkinson's disease (ADPD).

Notable Publications

Author	Pubmed ID	Journal	Application
Neeraja Purandare	36339251	iScience	IF
Neeraja Purandare	40710331	Cells	IF

Storage

Storage:

Store at -20°C. Avoid exposure to light. Stable for one year after shipment.

Storage Buffer:

PBS with 50% glycerol, 0.05% Proclin300, 0.5% BSA, pH7.3

Aliquoting is unnecessary for -20°C storage

For technical support and original validation data for this product please contact:

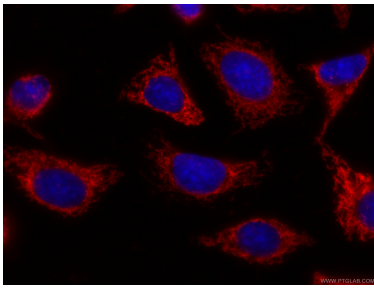
T: 4006900926

E: Proteintech-CN@ptglab.com

W: ptgcn.com

This product is exclusively available under Proteintech Group brand and is not available to purchase from any other manufacturer.

Selected Validation Data



Immunofluorescent analysis of (-20°C Ethanol) fixed HepG2 cells using CL594-66302 (CHCHD2 antibody) at dilution of 1:100.