

For Research Use Only

# CoraLite®594-conjugated MYL3 Monoclonal antibody



Catalog Number:CL594-66286

## Basic Information

**Catalog Number:**

CL594-66286

**Size:**

1000 µg/ml

**Source:**

Mouse

**Isotype:**

IgG1

**Immunogen Catalog Number:**

AG24535

**GenBank Accession Number:**

BC009790

**GeneID (NCBI):**

4634

**UNIPROT ID:**

P08590

**Full Name:**

myosin, light chain 3, alkali;  
ventricular, skeletal, slow

**Calculated MW:**

22 kDa

**Observed MW:**

22-25 kDa

**Purification Method:**

Protein G purification

**CloneNo.:**

2E4B2

**Recommended Dilutions:**

IF 1:50-1:500

**Excitation/Emission maxima  
wavelengths:**

588 nm / 604 nm

## Applications

**Tested Applications:**

IF/ICC

**Species Specificity:**

human, rat, mouse, pig

**Positive Controls:**

IF : C2C12 cells, mouse skeletal muscle tissue

## Background Information

MYL3, also named as MLC1v, is an essential light chain of myosin that is associated with muscle contraction. It is expressed in ventricular and slow skeletal muscle. MYL3 may serve as a target for caspase-3 in dying cardiomyocytes. Mutations of MYL3 gene cause hypertrophic cardiomyopathy. MYL3 has been identified as potential serum biomarker for drug induced myotoxicity. Great increase in MYL3 serum concentration has been observed in rats with cardiac and skeletal muscle injury. (PMID:21685905)

## Storage

**Storage:**

Store at -20°C. Avoid exposure to light. Stable for one year after shipment.

**Storage Buffer:**

PBS with 50% Glycerol, 0.05% Proclin300, 0.5% BSA, pH 7.3.

Aliquoting is unnecessary for -20°C storage

For technical support and original validation data for this product please contact:

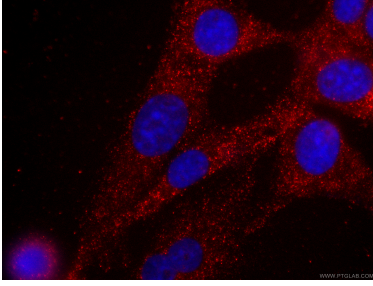
T: 4006900926

E: [Proteintech-CN@ptglab.com](mailto:Proteintech-CN@ptglab.com)

W: [ptgcn.com](http://ptgcn.com)

**This product is exclusively available under Proteintech Group brand and is not available to purchase from any other manufacturer.**

## Selected Validation Data



Immunofluorescent analysis of (-20°C Ethanol) fixed C2C12 cells using CL594-66286 (MYL3 antibody) at dilution of 1:100.