

For Research Use Only

CoraLite®594-conjugated ZEB1 Monoclonal antibody

Catalog Number:CL594-66279



Basic Information

Catalog Number: CL594-66279	GenBank Accession Number: BC112392	Purification Method: Protein G purification
Source: Mouse	GeneID (NCBI): 6935	CloneNo.: 1H1F1
Isotype: IgG1	UNIPROT ID: P37275	Recommended Dilutions: IF/ICC: 1:50-1:500
Immunogen Catalog Number: AG17118	Full Name: zinc finger E-box binding homeobox 1	Excitation/Emission maxima wavelengths: 588 nm / 604 nm
	Calculated MW: 1125 aa, 124 kDa	
	Observed MW: 190-200 kDa	

Applications

Tested Applications: IF/ICC	Positive Controls: IF/ICC : HEK-293 cells, U2OS cells
Species Specificity: human	

Background Information

ZEB1(zinc-finger-enhancer binding protein 1), which is a members of the Zincfinger-Homeobox (ZFH)-family of repressors, acts as a transcriptional repressor that inhibits interleukin-2 (IL-2) gene expression. Depending on the quantity of cDNA and on the cell type, ZEB1 can enhance or repress the promoter activity of the ATP1A1 gene . Represses E-cadherin promoter and induces an epithelial-mesenchymal transition (EMT) by recruiting SMARCA4/BRG1. Represses BCL6 transcription in the presence of the corepressor CTBP1. Positively regulates neuronal differentiation. The calculated molecular weight of ZEB1 is 124 kDa, but the post phosphorylation of protein is about 190-210 kDa.

Storage

Storage:
Store at -20°C. Avoid exposure to light. Stable for one year after shipment.
Storage Buffer:
PBS with 50% glycerol, 0.05% Proclin300, 0.5% BSA, pH7.3
Aliquoting is unnecessary for -20°C storage

For technical support and original validation data for this product please contact:

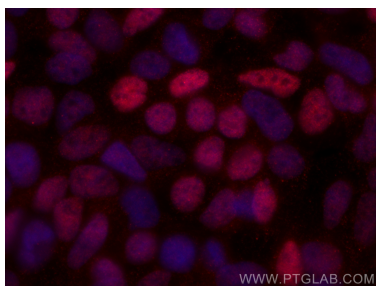
T: 4006900926

E: Proteintech-CN@ptglab.com

W: ptgcn.com

This product is exclusively available under Proteintech Group brand and is not available to purchase from any other manufacturer.

Selected Validation Data



Immunofluorescent analysis of (4% PFA) fixed HEK-293 cells using Coralite®594 ZEB1 antibody (CL594-66279, Clone: 1H1F1) at dilution of 1:200.