

# CoraLite®594-conjugated Alpha 1B-Glycoprotein Monoclonal antibody

Catalog Number: CL594-66260

## Basic Information

## Catalog Number:

CL594-66260

## Size:

1000 µg/ml

## Source:

Mouse

## Isotype:

IgG1

## Immunogen Catalog Number:

AG5414

## GenBank Accession Number:

BC035719

## GeneID (NCBI):

1

## UNIPROT ID:

P04217

## Full Name:

alpha-1-B glycoprotein

## Calculated MW:

54 kDa

## Observed MW:

72 kDa

## Purification Method:

Protein G purification

## CloneNo.:

4D4E5

## Recommended Dilutions:

IF/ICC 1:50-1:500

## Excitation/Emission maxima wavelengths:

588 nm / 604 nm

## Applications

## Tested Applications:

IF/ICC

## Species Specificity:

human

## Positive Controls:

IF/ICC : HepG2 cells,

## Background Information

Alpha-1B-glycoprotein (A1BG) is a plasma protein and is a member of the immunoglobulin superfamily. A1BG contains 474 amino acids and has 5 intrachain disulfide bonds. It has been reported that cysteine-rich secretory protein 3 (CRISP-3) is a specific and high-affinity ligand of A1BG. A1BG-CRISP-3 complex displays a similar function in protecting the circulation from a potentially harmful effect of free CRISP3 (PMID: 15461460).

## Storage

## Storage:

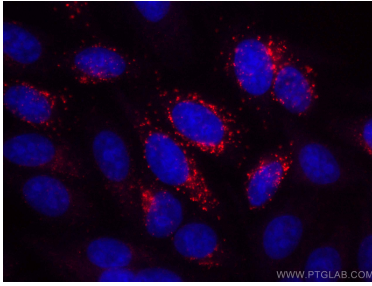
Store at -20°C. Avoid exposure to light.

## Storage Buffer:

PBS with 50% Glycerol, 0.05% Proclin300, 0.5% BSA, pH 7.3.

Aliquoting is unnecessary for -20°C storage

## Selected Validation Data



Immunofluorescent analysis of (-20°C Ethanol) fixed HepG2 cells using CoraLite® 594 Alpha 1B- Glycoprotein antibody (CL594-66260, Clone: 4D4E5 ) at dilution of 1:100.