

For Research Use Only

# CoraLite®594-conjugated C-Reactive Protein/CRP Monoclonal antibody

Catalog Number: CL594-66250

Featured Product



## Basic Information

Catalog Number:

CL594-66250

Concentration:

1000 ug/ml

Source:

Mouse

Isotype:

IgG2a

Immunogen Catalog Number:

AG9883

GenBank Accession Number:

BC020766

GeneID (NCBI):

1401

UNIPROT ID:

P02741

Full Name:

C-reactive protein, pentraxin-related

Calculated MW:

224 aa, 25 kDa

Observed MW:

27 kDa

Purification Method:

Protein A purification

CloneNo.:

3F10A11

Recommended Dilutions:

IF-P 1:50-1:500

Excitation/Emission maxima

wavelengths:

588 nm / 604 nm

## Applications

Tested Applications:

IF-P

Species Specificity:

human, mouse, rat, pig

Positive Controls:

IF-P : human liver tissue,

## Background Information

C-reactive protein (CRP) is an acute-phase serum protein synthesized by the liver in response to interleukin-6 (IL-6) during inflammation. The name of CRP derives from its ability to react with the C polysaccharide of *Streptococcus pneumoniae*. CRP is an annular, pentameric protein that belongs to the pentraxin family of proteins. CRP displays several functions associated with host defense: it promotes agglutination, bacterial capsular swelling, phagocytosis and complement fixation through its calcium-dependent binding to phosphorylcholine. It is used mainly as a marker of inflammation.

## Storage

Storage:

Store at -20°C. Avoid exposure to light. Stable for one year after shipment.

Storage Buffer:

PBS with 50% Glycerol, 0.05% Proclin300, 0.5% BSA, pH 7.3.

Aliquoting is unnecessary for -20°C storage

For technical support and original validation data for this product please contact:

T: 4006900926

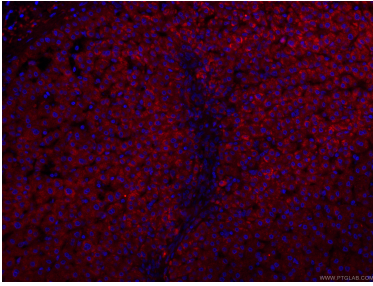
E: [Proteintech-CN@ptglab.com](mailto:Proteintech-CN@ptglab.com)

W: [ptgcn.com](http://ptgcn.com)

This product is exclusively available under Proteintech Group brand and is not available to purchase from any other manufacturer.

---

## Selected Validation Data



Immunofluorescent analysis of (4% PFA) fixed human liver tissue using CL594-66250 (CRP antibody) at dilution of 1:100.