

For Research Use Only

CoraLite®594-conjugated CHD4 Monoclonal antibody



Catalog Number:CL594-66222

Featured Product

Basic Information

Catalog Number:

CL594-66222

Size:

1000 µg/ml

Source:

Mouse

Isotype:

IgG1

Immunogen Catalog Number:

AG5729

GenBank Accession Number:

BC038596

GeneID (NCBI):

1108

UNIPROT ID:

Q14839

Full Name:

chromodomain helicase DNA binding
protein 4

Calculated MW:

1937 aa, 221 kDa

Observed MW:

260 kDa

Purification Method:

Protein G purification

CloneNo.:

3D9G2

Recommended Dilutions:

IF/ICC 1:50-1:500

Excitation/Emission maxima
wavelengths:

588 nm / 604 nm

Applications

Tested Applications:

IF/ICC

Species Specificity:

human

Positive Controls:

IF/ICC : HeLa cells,

Background Information

Chromodomain helicase DNA-binding protein 4 (CHD4) is an ATP dependent chromatin remodeler and a major subunit of the repressive NuRD complex [PMID:9790534]. This complex plays key roles in transcriptional regulation and reorganization and maintenance of chromatin structure, as it targets pericentromeric heterochromatin and has recently been implicated in DNA damage repair, being rapidly recruited to DNA double strand breaks [PMID:17694084]. CHD4 is a novel BRIT1 binding partner that regulates the HR repair process, which is a critical pathway of repairing DNA double strand breaks and plays an essential role in maintaining genomic integrity [PMID:22219182]. The calculated molecular weight of CHD4 is 218 kDa, but modified CHD4 is about 250-280 kDa.

Storage

Storage:

Store at -20°C. Avoid exposure to light.

Storage Buffer:

PBS with 50% Glycerol, 0.05% Proclin300, 0.5% BSA, pH 7.3.

Aliquoting is unnecessary for -20°C storage

For technical support and original validation data for this product please contact:

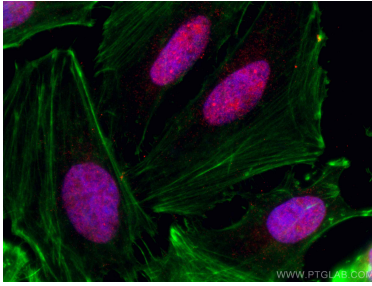
T: 4006900926

E: Proteintech-CN@ptglab.com

W: ptgcn.com

This product is exclusively available under Proteintech Group brand and is not available to purchase from any other manufacturer.

Selected Validation Data



Immunofluorescent analysis of (4% PFA) fixed HeLa cells using CoraLite®594 CHD4 antibody (CL594-66222, Clone: 3D9G2) at dilution of 1:100. Green: Stain with PF00001, CoraLite®488-Phalloidin.