

CoraLite®594-conjugated N-cadherin Monoclonal antibody

Catalog Number: **CL594-66219**

Basic Information

Catalog Number: CL594-66219	GenBank Accession Number: BC036470	Purification Method: Protein G purification
Size: 1000 µg/ml	GeneID (NCBI): 1000	CloneNo.: 1D8B3
Source: Mouse	Full Name: cadherin 2, type 1, N-cadherin (neuronal)	Recommended Dilutions: IF 1:200-1:800
Isotype: IgG1	Calculated MW: 906 aa, 100 kDa	Excitation/Emission maxima wavelengths: 593 nm / 614 nm
Immunogen Catalog Number: AG4996		

Applications

Tested Applications: IF	Positive Controls: IF : mouse heart tissue,
Species Specificity: human, pig, mouse, rat	

Background Information

Cadherins are a family of transmembrane glycoproteins that mediate calcium-dependent cell-cell adhesion and play an important role in the maintenance of normal tissue architecture. N-cadherin (neural cadherin), also known as CDH2 (cadherin 2), is a 130-kDa transmembrane protein and a classical member of the cadherin superfamily which also include E-, P-, R-, and B-cadherins. Expression of N-cadherin has been reported on various cell types including neurons, endothelial cells and cardiac myocytes (PMID: 11282032; 9508779; 8125202). N-cadherin has functions in early brain morphogenesis, synaptogenesis and synaptic plasticity (PMID: 23321619). The antibody is conjugated with CL594, Ex/Em 593 nm/614 nm.

Storage

Storage:
Store at -20°C. Avoid exposure to light. Stable for one year after shipment.
Storage Buffer:
PBS with 50% Glycerol, 0.05% Proclin300, 0.5% BSA, pH 7.3.
Aliquoting is unnecessary for -20°C storage

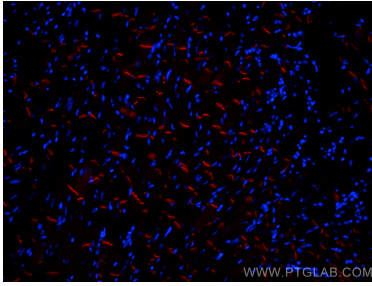
For technical support and original validation data for this product please contact:

T: 4006900926

E: Proteintech-CN@ptglab.comW: ptgcn.com

This product is exclusively available under Proteintech Group brand and is not available to purchase from any other manufacturer.

Selected Validation Data



Immunofluorescent analysis of (4% PFA) fixed mouse heart tissue using CoraLite® 594 N-cadherin antibody (CL594-66219, Clone: 1D8B3) at dilution of 1:400.