

# CoraLite®594-conjugated NSE Monoclonal antibody

Catalog Number: **CL594-66150**

## Basic Information

**Catalog Number:**

CL594-66150

**Size:**

1000 µg/ml

**Source:**

Mouse

**Isotype:**

IgG1

**Immunogen Catalog Number:**

AG19106

**GenBank Accession Number:**

BC002745

**GeneID (NCBI):**

2026

**UNIPROT ID:**

P09104

**Full Name:**

enolase 2 (gamma, neuronal)

**Calculated MW:**

47 kDa

**Observed MW:**

47 kDa

**Purification Method:**

Protein G purification

**CloneNo.:**

6F8G3

**Recommended Dilutions:**

IF-P 1:50-1:500

**Excitation/Emission maxima  
wavelengths:**

588 nm / 604 nm

## Applications

**Tested Applications:**

IF/ICC

**Species Specificity:**

human, mouse, rat, pig

**Positive Controls:**

IF-P : mouse brain tissue,

## Background Information

NSE, also named as ENO2, belongs to the enolase family. Enolases are cytoplasmic glycolytic enzymes that may be involved in differentiation. The enolase has three isoenzymes, alpha, beta and gamma. The alpha form is expressed in most tissues, whereas the beta form is expressed in muscle tissue. The gamma enolase (ENO2), a homodimer, is primarily localized in neurons and neuroendocrine cells and is a cancer diagnostic marker for brain tumors (PMID:7520111). ENO2 plays a role in the glycolysis-related energy pathway and might be involved in higher metabolic activity during the day than at night, at least in part. And this antibody is conjugated with CL594, Ex/Em 593 nm/614 nm.

## Storage

**Storage:**

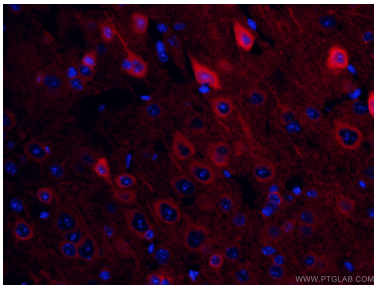
Store at -20°C. Avoid exposure to light. Stable for one year after shipment.

**Storage Buffer:**

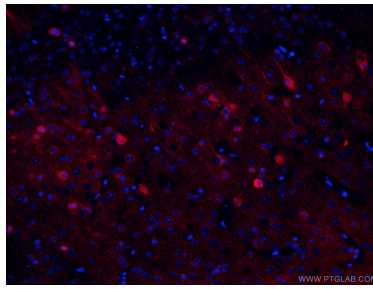
PBS with 50% Glycerol, 0.05% Proclin300, 0.5% BSA, pH 7.3.

Aliquoting is unnecessary for -20°C storage

## Selected Validation Data



Immunofluorescent analysis of (4% PFA) fixed mouse brain tissue using CL594-66150 (NSE antibody) at dilution of 1:50.



Immunofluorescent analysis of (4% PFA) fixed mouse brain tissue using CL594-66150 (NSE antibody) at dilution of 1:50.