

CoraLite®594-conjugated BBS5 Monoclonal antibody

Catalog Number: **CL594-66136**

Basic Information

Catalog Number: CL594-66136	GenBank Accession Number: BC044593	Purification Method: Protein G purification
Size: 1000 µg/ml	GeneID (NCBI): 129880	CloneNo.: 4G8E12
Source: Mouse	UNIPROT ID: Q8N3I7	Recommended Dilutions: IF-P 1:50-1:500
Isotype: IgG1	Full Name: Bardet-Biedl syndrome 5	Excitation/Emission maxima wavelengths: 588 nm / 604 nm
Immunogen Catalog Number: AG6844	Calculated MW: 39 kDa	

Applications

Tested Applications: IF-P	Positive Controls: IF-P : human kidney tissue,
Species Specificity: human, mouse	

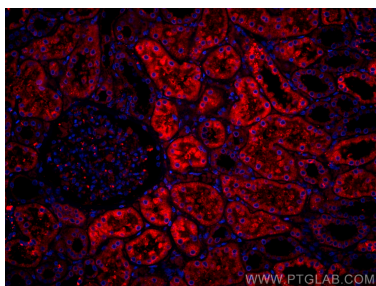
Background Information

BBS5 encodes a protein that has been directly linked to Bardet-Biedl syndrome. Bardet-Biedl syndrome (BBS) is an autosomal recessive condition characterised by rod-cone dystrophy, postaxial polydactyly, central obesity, mental retardation, hypogonadism, and renal dysfunction. Other associated clinical findings in BBS patients include diabetes, hypertension and congenital heart defects. BBS expression varies both within and between families and diagnosis is often difficult. Experimentation in non-human eukaryotes suggests that BBS5 is expressed in ciliated cells and that it is required for the formation of cilia. Alternate transcriptional splice variants have been observed but have not been fully characterized.

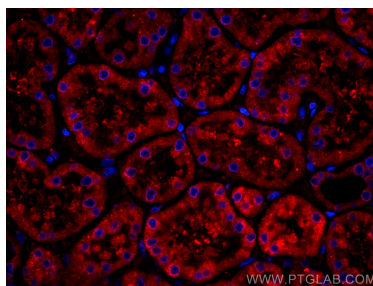
Storage

Storage:
Store at -20°C. Avoid exposure to light.
Storage Buffer:
PBS with 50% Glycerol, 0.05% Proclin300, 0.5% BSA, pH 7.3.
Aliquoting is unnecessary for -20°C storage

Selected Validation Data



Immunofluorescent analysis of (4% PFA) fixed human kidney tissue using CoraLite®594 BBS5 antibody (CL594-66136, Clone: 4G8E12) at dilution of 1:100.



Immunofluorescent analysis of (4% PFA) fixed human kidney tissue using CoraLite®594 BBS5 antibody (CL594-66136, Clone: 4G8E12) at dilution of 1:100.