

CoraLite®594-conjugated ACTC1-specific Monoclonal antibody

Catalog Number: **CL594-66125**

Basic Information

Catalog Number:

CL594-66125

Size:

1000 µg/ml

Source:

Mouse

Isotype:

IgG1

GenBank Accession Number:

NM_005159

GeneID (NCBI):

70

UNIPROT ID:

P68032

Full Name:

actin, alpha, cardiac muscle 1

Calculated MW:

42 kDa

Purification Method:

Protein G purification

CloneNo.:

1F2B9

Recommended Dilutions:

IF-P 1:50-1:500

Excitation/Emission maxima wavelengths:

588 nm / 604 nm

Applications

Tested Applications:

IF-P, FC (Intra)

Species Specificity:

human, mouse, rat, pig

Positive Controls:

IF-P : mouse heart tissue,

Background Information

Actins are highly conserved proteins that are involved in various types of cell motility and are ubiquitously expressed in all eukaryotic cells. The ACTC1 gene encodes cardiac muscle alpha-actin, the predominant actin isoform in adult heart, which interacts with a variety of proteins to produce the force for muscle contraction. This antibody is specific to the ACTC1. It does not cross-react with other actin isoforms. The antibody is conjugated with CL594, Ex/Em 593 nm/614 nm.

Storage

Storage:

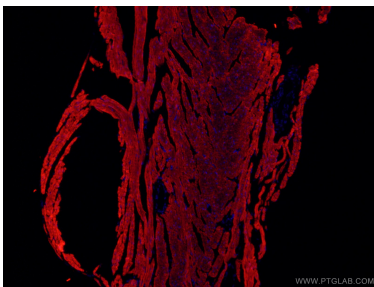
Store at -20°C. Avoid exposure to light. Stable for one year after shipment.

Storage Buffer:

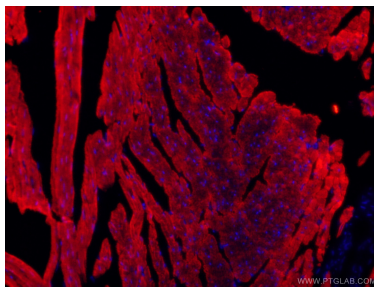
PBS with 50% Glycerol, 0.05% Proclin300, 0.5% BSA, pH 7.3.

Aliquoting is unnecessary for -20°C storage

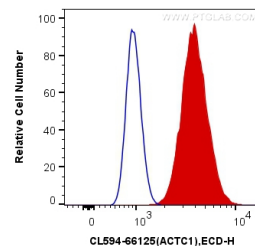
Selected Validation Data



Immunofluorescent analysis of (4% PFA) fixed mouse heart tissue using CL594-66125 (ACTC1-specific antibody) at dilution of 1:100.



Immunofluorescent analysis of (4% PFA) fixed mouse heart tissue using CL594-66125 (ACTC1-specific antibody) at dilution of 1:100.



1X10⁶ C2C12 cells were intracellularly stained with 0.4 ug CoraLite®594 Anti-Human ACTC1-specific (CL594-66125, Clone:1F2B9) (red), or 0.4 ug Mouse IgG1 Isotype Control (CL594-66360, Clone:T1F8D3F10) (blue). Cells were fixed with 4% PFA and permeabilized with Flow Cytometry Perm Buffer (PF00011-C).