

# CoraLite®594-conjugated EPLIN Monoclonal antibody

Catalog Number: CL594-66071

Featured Product

## Basic Information

**Catalog Number:**

CL594-66071

**Size:**

924 µg/ml

**Source:**

Mouse

**Isotype:**

IgG1

**Immunogen Catalog Number:**

AG13288

**GenBank Accession Number:**

BC001247

**GeneID (NCBI):**

51474

**UNIPROT ID:**

Q9UHB6

**Full Name:**

LIM domain and actin binding 1

**Calculated MW:**

85 kDa

**Observed MW:**

90 kDa, 110 kDa

**Purification Method:**

Protein G purification

**CloneNo.:**

6E6E6

**Recommended Dilutions:**

IF/ICC 1:50-1:500

**Excitation/Emission maxima  
wavelengths:**

588 nm / 604 nm

## Applications

**Tested Applications:**

IF/ICC

**Species Specificity:**

human, rat

**Positive Controls:**

IF/ICC : HeLa cells,

## Background Information

EPLIN is a cytoskeletal protein that is preferentially expressed in epithelial cells and is implicated in regulation of cytoskeletal dynamics and cytokinesis. In human, there are two known isoforms, EPLIN-a and -b, generated by alternative promoter usage from a single gene. EPLIN-a expression is often down-regulated in cancerous cells and tissues. This antibody recognizes both of isoforms of EPLN.

## Storage

**Storage:**

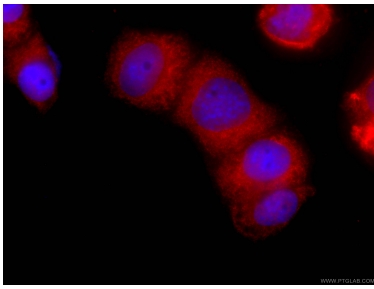
Store at -20°C. Avoid exposure to light. Stable for one year after shipment.

**Storage Buffer:**

PBS with 50% Glycerol, 0.05% Proclin300, 0.5% BSA, pH 7.3.

Aliquoting is unnecessary for -20°C storage

## Selected Validation Data



Immunofluorescent analysis of (-20°C Ethanol) fixed HeLa cells using CL594-66071 (EPLIN antibody) at dilution of 1:100.