

For Research Use Only

CoraLite®594-conjugated LONP1 Monoclonal antibody



Catalog Number:CL594-66043

Basic Information

Catalog Number: CL594-66043	GenBank Accession Number: BC000235	Purification Method: Protein G purification
Size: 2000 µg/ml	GeneID (NCBI): 9361	CloneNo.: 1C6C12
Source: Mouse	UNIPROT ID: P36776	Recommended Dilutions: IF 1:50-1:500
Isotype: IgG1	Full Name: Lon peptidase 1, mitochondrial	Excitation/Emission maxima wavelengths: 588 nm / 604 nm
Immunogen Catalog Number: AG7306	Calculated MW: 106 kDa	
	Observed MW: 100 kDa	

Applications

Tested Applications: IF/ICC	Positive Controls: IF : C6 cells,
Species Specificity: human, mouse, rat	

Background Information

LONP1(Lon protease homolog, mitochondrial) is also named as LONP, LONHS, HLON, LON, PRSS15, PIM1, MGC1498 and belongs to the peptidase S16 family. It seems to play a major role in the elimination of oxidatively modified proteins in the mitochondrial matrix(PMID:18021745). LONP1, also a nuclearly encoded and mitochondrially located stress-responsive protease, is involved in heme-mediated ALAS-1 turnover(PMID:21659532). It recognizes specific surface determinants or folds, initiates proteolysis at solvent-accessible sites, and generates unfolded polypeptides that are then processively degraded(PMID:15870080).

Storage

Storage:
Store at -20°C. Avoid exposure to light. Stable for one year after shipment.
Storage Buffer:
PBS with 50% Glycerol, 0.05% Proclin300, 0.5% BSA, pH 7.3.
Aliquoting is unnecessary for -20°C storage

For technical support and original validation data for this product please contact:

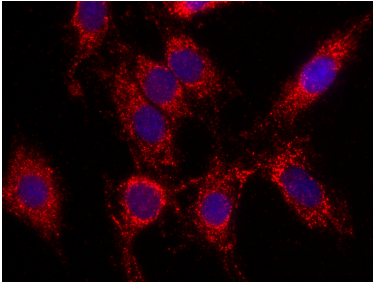
T: 4006900926

E: Proteintech-CN@ptglab.com

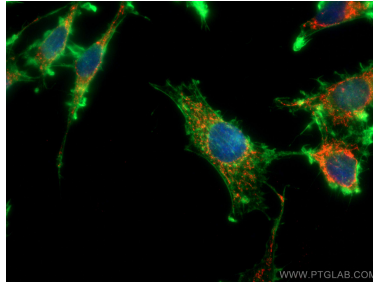
W: ptgcn.com

This product is exclusively available under Proteintech Group brand and is not available to purchase from any other manufacturer.

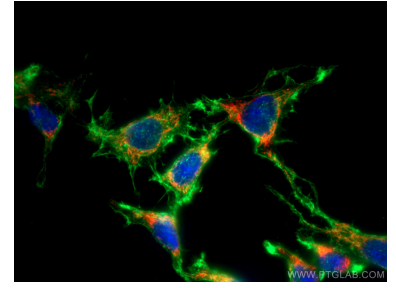
Selected Validation Data



Immunofluorescent analysis of (4% PFA) fixed C6 cells using Coralite@594 LONP1 antibody (CL594-66043, Clone: 1C6C12) at dilution of 1:100. DAPI (blue).



Immunofluorescent analysis of (4% PFA) fixed C6 cells using Coralite@594 LONP1 antibody (CL594-66043, Clone: 1C6C12) at dilution of 1:100, CL488-phalloidine (green).



Immunofluorescent analysis of (-20°C Ethanol) fixed C6 cells using Coralite@594 LONP1 antibody (CL594-66043, Clone: 1C6C12) at dilution of 1:100, CL488-phalloidine (green).