

CoraLite®594-conjugated ASS1 Monoclonal antibody

Catalog Number: **CL594-66036**

Featured Product

Basic Information

Catalog Number:

CL594-66036

Size:

833 µg/ml

Source:

Mouse

Isotype:

IgG1

Immunogen Catalog Number:

AG9314

GenBank Accession Number:

BC009243

GeneID (NCBI):

445

UNIPROT ID:

P00966

Full Name:

argininosuccinate synthetase 1

Calculated MW:

412 aa, 47 kDa

Observed MW:

40-45 kDa

Purification Method:

Protein G purification

CloneNo.:

1D1A11

Recommended Dilutions:

IF/ICC 1:50-1:500

Excitation/Emission maxima
wavelengths:

588 nm / 604 nm

Applications

Tested Applications:

IF/ICC

Species Specificity:

human, pig, mouse, rat

Positive Controls:

IF/ICC : MCF-7 cells,

Background Information

ASS1 is a rate-limiting enzyme in the urea cycle. Citrullinemia type I is an autosomal recessive disorder that is caused by a deficiency of the urea cycle enzyme argininosuccinate synthetase (ASS1). Deficiency of ASS1 shows various clinical manifestations encompassing severely affected patients with fatal neonatal hyperammonemia as well as asymptomatic individuals with only a biochemical phenotype (PMID:19006241).

Storage

Storage:

Store at -20°C. Avoid exposure to light. Stable for one year after shipment.

Storage Buffer:

PBS with 50% Glycerol, 0.05% Proclin300, 0.5% BSA, pH 7.3.

Aliquoting is unnecessary for -20°C storage

For technical support and original validation data for this product please contact:

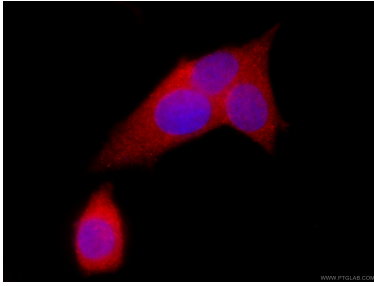
T: 4006900926

E: Proteintech-CN@ptglab.com

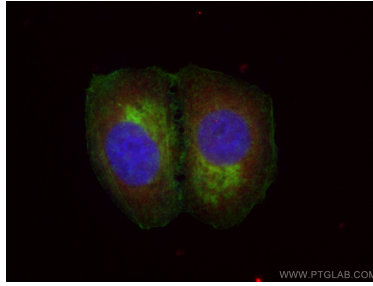
W: ptgcn.com

This product is exclusively available under Proteintech Group brand and is not available to purchase from any other manufacturer.

Selected Validation Data



Immunofluorescent analysis of (4% PFA) fixed MCF-7 cells using CL594-66036 (ASS1 antibody) at dilution of 1:100.



Immunofluorescent analysis of (4% PFA) fixed MCF-7 cells using CoraLite® 594-conjugated ASS1 antibody (CL594-66036, Clone: 1D1A11) at dilution of 1:100, 488phalloidin (green).