

For Research Use Only

CoraLite®594-conjugated IVD Monoclonal antibody



Catalog Number:CL594-66032

Basic Information

Catalog Number:

CL594-66032

Size:

1000 µg/ml

Source:

Mouse

Isotype:

IgG2a

Immunogen Catalog Number:

AG18042

GenBank Accession Number:

BC017202

GeneID (NCBI):

3712

UNIPROT ID:

P26440

Full Name:

isovaleryl Coenzyme A
dehydrogenase

Calculated MW:

46 kDa

Observed MW:

41-46 kDa

Purification Method:

Protein A purification

CloneNo.:

2D12A5

Recommended Dilutions:

IF-P 1:50-1:500

Excitation/Emission maxima
wavelengths:

588 nm / 604 nm

Applications

Tested Applications:

IF/ICC

Species Specificity:

human

Positive Controls:

IF-P : human liver cancer tissue,

Background Information

IVD(Isovaleryl CoA dehydrogenase, mitochondrial) is a member of the acylCoA dehydrogenase family and is involved in the catabolism of leucine. In size, IVD precursor and mature proteins produced by class I mutants are indistinguishable from their normal counterparts. Class II, III, and IV mutants make IVD precursor proteins 42 kD in size rather than the normal 45 kD(PMID:2063866). It has 2 isoforms produced by alternative splicing.

Storage

Storage:

Store at -20°C. Avoid exposure to light. Stable for one year after shipment.

Storage Buffer:

PBS with 50% Glycerol, 0.05% Proclin300, 0.5% BSA, pH 7.3.

Aliquoting is unnecessary for -20°C storage

For technical support and original validation data for this product please contact:

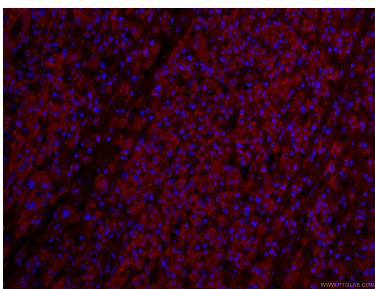
T: 4006900926

E: Proteintech-CN@ptglab.com

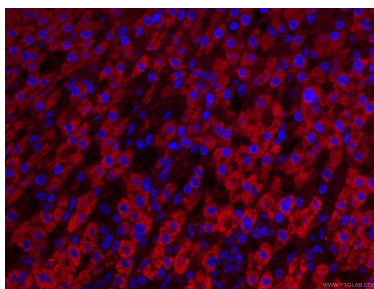
W: ptgcn.com

This product is exclusively available under Proteintech Group brand and is not available to purchase from any other manufacturer.

Selected Validation Data



Immunofluorescent analysis of (4% PFA) fixed human liver cancer tissue using CL594-66032 (IVD antibody) at dilution of 1:100.



Immunofluorescent analysis of (4% PFA) fixed human liver cancer tissue using CL594-66032 (IVD antibody) at dilution of 1:100.