

CoraLite®594-conjugated Protein C inhibitor Monoclonal antibody

Catalog Number: **CL594-66030**

Basic Information

Catalog Number:

CL594-66030

Size:

1000 µg/ml

Source:

Mouse

Isotype:

IgG2a

Immunogen Catalog Number:

AG18094

GenBank Accession Number:

BC008915

GeneID (NCBI):

5104

UNIPROT ID:

P05154

Full Name:

serpin peptidase inhibitor, clade A
(alpha-1 antiproteinase, antitrypsin),
member 5

Calculated MW:

46 kDa

Purification Method:

Protein A purification

CloneNo.:

2H6G2

Recommended Dilutions:

IF 1:50-1:500

**Excitation/Emission maxima
wavelengths:**

588 nm / 604 nm

Applications

Tested Applications:

IF-P

Species Specificity:

human

Positive Controls:

IF : human ovary tumor tissue,

Background Information

SERPINA5 (also called Protein C Inhibitor, PCI) is a serpin type of serine protease inhibitor that is found in many tissues and fluids in human, including blood plasma, seminal plasma and urine. PCI found in blood originates from the liver and is capable of inhibiting several serine proteases involved in the regulation of coagulation and fibrinolysis, including activated protein C, thrombin, factor Xa, various kallikreins and plasminogen activators. PCI has been found to have antimicrobial and antitumor properties and thus appears to be a multi-functional protein.

Storage

Storage:

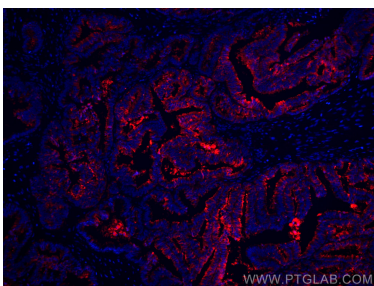
Store at -20°C. Avoid exposure to light.

Storage Buffer:

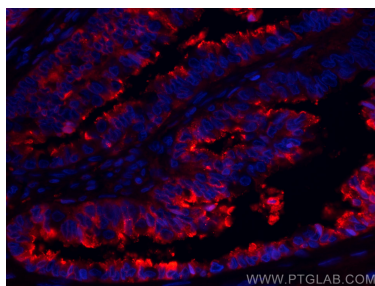
PBS with 50% Glycerol, 0.05% Proclin300, 0.5% BSA, pH 7.3.

Aliquoting is unnecessary for -20°C storage

Selected Validation Data



Immunofluorescent analysis of (4% PFA) fixed human ovary tumor tissue using CoraLite®594 Protein C inhibitor antibody (CL594-66030, Clone: 2H6G2) at dilution of 1:200.



Immunofluorescent analysis of (4% PFA) fixed human ovary tumor tissue using CoraLite®594 Protein C inhibitor antibody (CL594-66030, Clone: 2H6G2) at dilution of 1:200.