

CoraLite®594-conjugated Bcl-XL Monoclonal antibody

Catalog Number: **CL594-66020**

Basic Information

Catalog Number: CL594-66020	GenBank Accession Number: BC019307	Purification Method: Protein A purification
Size: 1000 µg/ml	GeneID (NCBI): 598	CloneNo.: 4C12A6
Source: Mouse	UNIPROT ID: Q07817	Recommended Dilutions: IF/ICC 1:50-1:500
Isotype: IgG2b	Full Name: BCL2-like 1	Excitation/Emission maxima wavelengths: 588 nm / 604 nm
Immunogen Catalog Number: AG18037	Calculated MW: 26 kDa	

Applications

Tested Applications: IF/ICC, FC (Intra)	Positive Controls: IF/ICC : HeLa cells, MDCK cells
Species Specificity: human, canine	

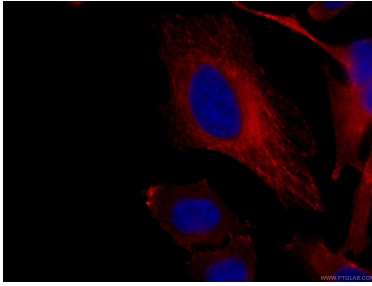
Background Information

BCL2L1 is a member of the BCL-2 protein family. BCL2L1 is expressed as three isoforms, Bcl-X(L), Bcl-X(s) and Bcl-X(beta), and is located at the outer mitochondrial membrane. The Bcl-XL isoform is a 233 amino acid protein, acting as an apoptotic inhibitor. Bcl-XL can form heterodimers with BAX, BAK or BCL2, and the heterodimerization with BAX does not seem to be required for anti-apoptotic activity. The Bcl-XS isoform is a shorter variant that is 178 amino acids in length and lacks a 63 amino acid region (amino acids 126-188), acting as an apoptotic activator.

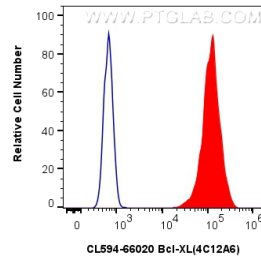
Storage

Storage:
Store at -20°C. Avoid exposure to light. Stable for one year after shipment.
Storage Buffer:
PBS with 50% Glycerol, 0.05% Proclin300, 0.5% BSA, pH 7.3.
Aliquoting is unnecessary for -20°C storage

Selected Validation Data



Immunofluorescent analysis of (4% PFA) fixed HeLa cells using CL594-66020 (Bcl-XL antibody) at dilution of 1:100.



1X10⁶ HeLa cells were intracellularly stained with 0.4 ug CoraLite®594 Anti-Human Bcl-XL (CL594-66020, Clone:4C12A6) (red), or 0.4 ug . Cells were fixed with 4% PFA and permeabilized with Flow Cytometry Perm Buffer (PF00011-C).