

For Research Use Only

# CoraLite®594 Anti-Mouse NKp46/NCR1 (29A1.4) Rat Recombinant Antibody

Catalog Number:CL594-65667



## Basic Information

Catalog Number:

CL594-65667

Concentration:

100ug, 500 ug/ml

Source:

Rat

Isotype:

IgG2a

GenBank Accession Number:

BC042788

GeneID (NCBI):

17086

UNIPROT ID:

Q8C567

Full Name:

natural cytotoxicity triggering  
receptor 1

Purification Method:

Protein A purification

CloneNo.:

29A1.4

Recommended Dilutions:

FC: 0.25 ug per 10<sup>6</sup> cells in a 100 µl  
suspension

Excitation/Emission maxima  
wavelengths:

588 nm / 604 nm

## Applications

Tested Applications:

FC

Species Specificity:

mouse

Positive Controls:

FC : mouse splenocytes,

## Background Information

NKp46, also known as NCR1 or CD335, is an Ig-like superfamily cell surface receptor that is highly conserved in mammals (PMID: 22021440). NKp46 is a type I transmembrane glycoprotein consisting of two extracellular Ig-like domains, a transmembrane domain, and an intracellular tail (PMID: 9730896). It is expressed on NK cells, rare T-cell subsets and a mucosal population of NKp46+ innate lymphoid cells (PMID: 9730896; 22021440). NKp46 is the major triggering receptor involved in the natural cytotoxicity (PMID: 10359120; 10092106; 15356098).

## Storage

Storage:

Store at 2-8°C. Avoid exposure to light. Stable for one year after shipment.

Storage Buffer:

PBS with 0.09% sodium azide, pH7.3

For technical support and original validation data for this product please contact:

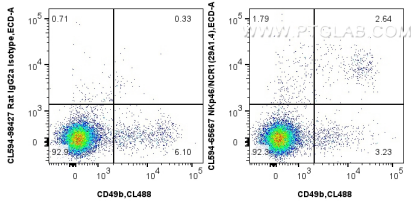
T: 4006900926

E: [Proteintech-CN@ptglab.com](mailto:Proteintech-CN@ptglab.com)

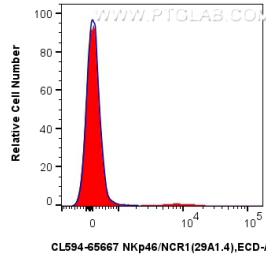
W: [ptgcn.com](http://ptgcn.com)

**This product is exclusively available under Proteintech Group brand and is not available to purchase from any other manufacturer.**

## Selected Validation Data



1x10<sup>6</sup> mouse splenocytes were surface stained with CoraLite® Plus 488 Anti-Mouse CD49b, and 0.25 ug CoraLite®594 Anti-Mouse NKp46/NCR1 (29A1.4) Rat IgG2a RecAb (CL594-65667, Clone: 29A1.4) or CoraLite®594 Rat IgG2a Isotype Control Recombinant Antibody (CL594-98427, Clone: 250862A1). Cells were not fixed.



1x10<sup>6</sup> mouse splenocytes were surface stained with 0.25 ug CoraLite®594 Anti-Mouse NKp46/NCR1 (29A1.4) Rat IgG2a RecAb (CL594-65667, Clone: 29A1.4) (red) or CoraLite®594 Rat IgG2a Isotype Control Recombinant Antibody (CL594-98427, Clone: 250862A1) (blue). Cells were not fixed.