

For Research Use Only

CoraLite®594 Anti-Human CD5 (L17F12) Mouse IgG2a Recombinant Antibody

Catalog Number: CL594-65599



Basic Information

Catalog Number:

CL594-65599

Concentration:

100tests, 5 ul/test

Source:

Mouse

Isotype:

IgG2a

GenBank Accession Number:

BC027901

GeneID (NCBI):

921

ENSEMBL Gene ID:

ENSG00000110448

Full Name:

CD5 molecule

Calculated MW:

495 aa, 55 kDa

Purification Method:

Protein A purification

CloneNo.:

L17F12

Excitation/Emission maxima wavelengths:

588 nm / 604 nm

Applications

Tested Applications:

FC

Species Specificity:

human

Background Information

CD5 is a type I transmembrane glycoprotein of the scavenger receptor cysteine-rich family (PMID: 12403363). CD5 is expressed on a majority of thymocytes, mature T cells, B cell subsets, and peripheral blood dendritic cells (PMID: 9858516; 6156984; 10379049; 1384337). CD5 may act as a receptor in regulating T-cell proliferation. It functions as a negative regulator of TCR signaling during thymocyte development (PMID: 7542801).

Storage

Storage:

Store at 2-8°C. Avoid exposure to light. Stable for one year after shipment.

Storage Buffer:

PBS with 0.09% sodium azide and 0.5% BSA

For technical support and original validation data for this product please contact:

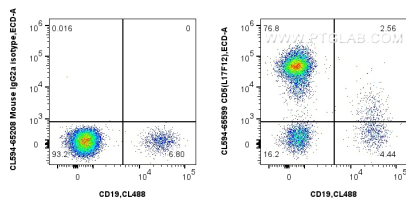
T: 4006900926

E: Proteintech-CN@ptglab.com

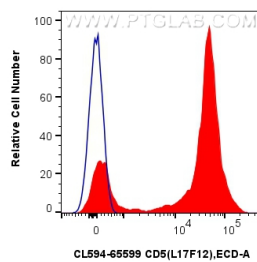
W: ptgcn.com

This product is exclusively available under Proteintech Group brand and is not available to purchase from any other manufacturer.

Selected Validation Data



1x10⁶ human PBMCs were surface stained with CoraLite® Plus 488 Anti-Human CD19, and 5 ul CoraLite®594 Anti-Human CD5 (L17F12) Mouse IgG2a RecAb (CL594-65599, Clone: L17F12) or CoraLite®594 Mouse IgG2a Isotype Control (C1.18.4) (CL594-65208, Clone: C1.18.4). Cells were not fixed. Lymphocytes were gated.



1x10⁶ human PBMCs were surface stained with 5 ul CoraLite®594 Anti-Human CD5 (L17F12) Mouse IgG2a RecAb (CL594-65599, Clone: L17F12)(red) or CoraLite®594 Mouse IgG2a Isotype Control (C1.18.4) (CL594-65208, Clone: C1.18.4) (blue). Cells were not fixed. Lymphocytes were gated.