

For Research Use Only

# CoraLite®594 Anti-Human HLA-DR (L243) Mouse IgG2a Recombinant Antibody

Catalog Number: CL594-65560



## Basic Information

**Catalog Number:**

CL594-65560

**Size:**

100tests, 5 ul/test

**Source:**

Mouse

**Isotype:**

IgG2a

**GenBank Accession Number:**

BC032350

**GeneID (NCBI):**

3122

**ENSEMBL Gene ID:**

ENSG00000204287

**UNIPROT ID:**

P01903

**Full Name:**

major histocompatibility complex, class II, DR alpha

**Calculated MW:**

254 aa, 29 kDa

**Purification Method:**

Protein A purification

**CloneNo.:**

L243

**Excitation/Emission maxima wavelengths:**

588 nm / 604 nm

## Applications

**Tested Applications:**

FC

**Species Specificity:**

human

## Background Information

HLA-DR is a member of MHC class II molecules encoded by the human leukocyte antigen complex on the region 6p21.31 of chromosome 6. HLA-DR is composed of two non-covalently associated transmembrane glycoproteins (the  $\alpha$  and  $\beta$  chains), and is primarily expressed on B lymphocytes, monocytes, dendritic cells and thymic epithelial cells (PMID: 33125816). HLA-DR participate in the antigen presentation to CD4+ or CD8+ T cells and is postulated as a general biomarker of sepsis-induced immunosuppression (PMID: 28199206, 32421903).

## Storage

**Storage:**

Store at 2-8°C. Avoid exposure to light. Stable for one year after shipment.

**Storage Buffer:**

PBS with 0.09% sodium azide.

For technical support and original validation data for this product please contact:

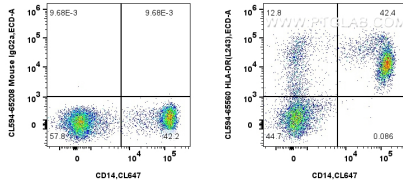
T: 4006900926

E: Proteintech-CN@ptglab.com

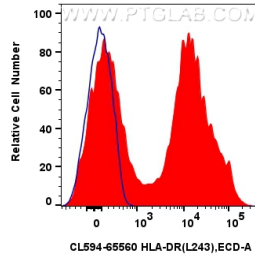
W: ptgcn.com

This product is exclusively available under Proteintech Group brand and is not available to purchase from any other manufacturer.

## Selected Validation Data



1x10<sup>6</sup> human PBMCs were surface stained with CoraLite® Plus 647 Anti-Human CD14 and 5 ul CoraLite®594 Anti-Human HLA-DR (L243) Mouse IgG2a Recombinant Antibody (CL594-65560, Clone: L243), or 5 ul CoraLite®594 Mouse IgG2a Isotype Control (C1.18.4) (CL594-65208, Clone: C1.18.4). Cells were incubated with FC Receptor Block prior to staining. Cells were not fixed.



1x10<sup>6</sup> human PBMCs were surface stained with 5 ul CoraLite®594 Anti-Human HLA-DR (L243) Mouse IgG2a Recombinant Antibody (CL594-65560, Clone: L243) (red), or CoraLite®594 Mouse IgG2a Isotype Control (C1.18.4) (CL594-65208, Clone: C1.18.4) (blue). Cells were incubated with FC Receptor Block prior to staining. Cells were not fixed.