

For Research Use Only

CoraLite® Plus 594 Anti-Human CD14 (26IC)



Catalog Number: CL594-65246

Basic Information

Catalog Number: CL594-65246	GenBank Accession Number: BC010507	Purification Method: Affinity purification
Size: 100tests, 5 µl/test	GeneID (NCBI): 929	CloneNo.: 26IC
Source: Mouse	ENSEMBL Gene ID: ENSG00000170458	Excitation/Emission maxima wavelengths: 594 nm / 615 nm
Isotype: IgG2b	UNIPROT ID: P08571	
	Full Name: CD14 molecule	
	Calculated MW: 375 aa, 40 kDa	

Applications

Tested Applications:
FC

Species Specificity:
Human

Background Information

CD14 is a 50-55 kDa glycosylphosphatidylinositol-anchored glycoprotein preferentially expressed on monocytes and macrophages, and at lower levels on granulocytes (PMID: 3385210; 2462937; 7685797). CD14 can also exist as a soluble protein. CD14 acts as a co-receptor for bacterial liposaccharides (LPS) (PMID: 1698311). It plays a major role in the inflammatory response of monocytes to LPS.

Storage

Storage:
Store at 2-8°C. Avoid exposure to light. Stable for one year after shipment.

Storage Buffer:
PBS with 0.09% sodium azide and 0.5% BSA.

For technical support and original validation data for this product please contact:

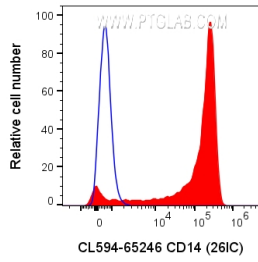
T: 4006900926

E: Proteintech-CN@ptglab.com

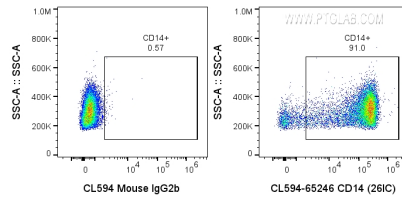
W: ptgcn.com

This product is exclusively available under Proteintech Group brand and is not available to purchase from any other manufacturer.

Selected Validation Data



1X10⁶ human PBMCs were surface stained with 5 ul CoraLite® Plus 594 Anti-Human CD14 (CL594-65246, Clone:261C) or CoraLite® 594 Mouse IgG2b Isotype Control. Cells were not fixed. Lymphocytes were gated.



1X10⁶ human PBMCs were surface stained with 5 ul CoraLite® Plus 594 Anti-Human CD14 (CL594-65246, Clone:261C) or CoraLite® 594 Mouse IgG2b Isotype Control. Cells were not fixed. Lymphocytes were gated.