

For Research Use Only

CoraLite®594 Anti-Human HLA-DR (L243)



Catalog Number: **CL594-65218**

Basic Information

Catalog Number:

CL594-65218

Size:

100tests, 5 µl/test

Source:

Mouse

Isotype:

IgG2a, kappa

GenBank Accession Number:

BC032350

GeneID (NCBI):

3122

ENSEMBL Gene ID:

ENSG00000204287

UNIPROT ID:

P01903

Full Name:

major histocompatibility complex, class II, DR alpha

Calculated MW:

254 aa, 29 kDa

Purification Method:

Protein A purification

CloneNo.:

L243

Excitation/Emission maxima wavelengths:

588 nm / 604 nm

Applications

Tested Applications:

FC

Species Specificity:

Human

Background Information

Storage

Storage:

Store at 2-8°C. Avoid exposure to light. Stable for one year after shipment.

Storage Buffer:

PBS with 0.1% sodium azide and 0.5% BSA, pH 7.3.

For technical support and original validation data for this product please contact:

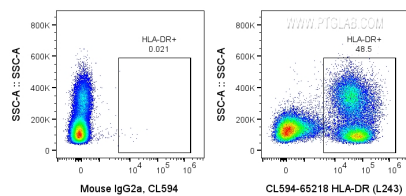
T: 4006900926

E: Proteintech-CN@ptglab.com

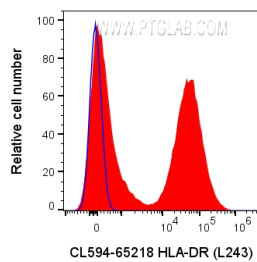
W: ptgcn.com

This product is exclusively available under Proteintech Group brand and is not available to purchase from any other manufacturer.

Selected Validation Data



1X10⁶ human PBMCs were surface stained with 5 ul CoraLite®594 Anti-Human HLA-DR (CL594-65218, Clone:L243), or Mouse IgG2a Isotype Control. Cells were not fixed. Lymphocytes and monocytes were gated.



1X10⁶ human PBMCs were surface stained with 5 ul CoraLite®594 Anti-Human HLA-DR (CL594-65218, Clone:L243), or Mouse IgG2a Isotype Control. Cells were not fixed. Lymphocytes and monocytes were gated.