

# CoraLite<sup>®</sup>594 Anti-Mouse PLVAP (MECA-32)

Catalog Number: **CL594-65214**

## Basic Information

**Catalog Number:**

CL594-65214

**Size:**

100ug, 0.5 mg/ml

**Source:**

Rat

**Isotype:**

IgG2a, kappa

**GenBank Accession Number:**

BC013517

**GeneID (NCBI):**

84094

**UNIPROT ID:**

Q91VC4

**Full Name:**

plasmalemma vesicle associated protein

**Purification Method:**

Protein A purification

**CloneNo.:**

MECA-32

**Excitation/Emission maxima wavelengths:**

588 nm / 604 nm

## Applications

**Tested Applications:**

FC

**Species Specificity:**

Mouse

## Background Information

Plasmalemma vesicle-associated protein (PLVAP), also known as PV-1, PAL-E and MECA-32 antigen, is an endothelial cell-specific type II membrane N-glycosylated glycoprotein with a molecular weight of approximately 50-65 kDa, that forms homodimers in situ (PMID: 7626790; 30231925). The MECA-32 antibody, derived from rats immunized with murine lymph node stroma, shows high specificity for mouse endothelium in both embryonic and mature tissues (PMID: 2683264; 7626790). It recognizes most endothelial cells in the embryonic and in the adult mouse, with the exception of the brain, skeletal, and cardiac muscle, where the MECA-32 antigen has a more restricted distribution. In skeletal and cardiac muscle only small arterioles and venules express the MECA-32 antigen, while in the brain its expression is negatively correlated with the differentiation of the vasculature to form the blood brain barrier (PMID: 7626790).

## Storage

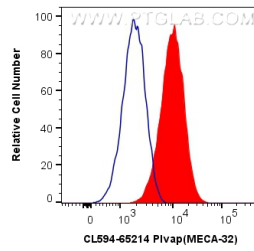
**Storage:**

Store at 2-8°C. Avoid exposure to light. Stable for one year after shipment.

**Storage Buffer:**

PBS with 0.1% sodium azide and 0.5% BSA, pH 7.3.

## Selected Validation Data



1X10<sup>6</sup> bEnd.3 cells were surface stained with 1 ug CoraLite®594 Anti-Mouse Plvap (CL594-65214, Clone:MECA-32) (red), or 1 ug Isotype Control. Cells were not fixed.