

For Research Use Only

CoraLite®594 Mouse IgG1 Isotype Control (MOPC-21)

Catalog Number: CL594-65124



Basic Information

Catalog Number:

CL594-65124

Concentration:

100ug, 500 ug/ml

Source:

Mouse

Isotype:

IgG1, kappa

GenBank Accession Number:

GeneID (NCBI):

16017

UNIPROT ID:

P01868

Full Name:

immunoglobulin heavy constant gamma 1 (G1m marker)

Purification Method:

Affinity purification

CloneNo.:

MOPC-21

Recommended Dilutions:

FC: 0.5 ug per 10⁶ cells in 100 µl suspension

Excitation/Emission maxima wavelengths:

588 nm / 604 nm

Applications

Tested Applications:

FC

Species Specificity:

n/a

Positive Controls:

FC : ,

Background Information

The MOPC-21 immunoglobulin is useful as an isotype-matched control. The MOPC-21 immunoglobulin has an unknown binding specificity and is used as an isotype control for mouse IgG1 antibodies. This antibody has been quality-tested for flow cytometry as negative control.

Storage

Storage:

Store at 2-8°C. Avoid exposure to light. Stable for one year after shipment.

Storage Buffer:

PBS with 50% glycerol, 0.05% Proclin300, 0.5% BSA, pH7.3

For technical support and original validation data for this product please contact:

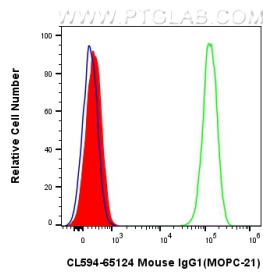
T: 4006900926

E: Proteintech-CN@ptglab.com

W: ptgcn.com

This product is exclusively available under Proteintech Group brand and is not available to purchase from any other manufacturer.

Selected Validation Data



1X10⁶ Jurkat cells were surface stained with 0.5 ug CoraLite®594 Anti-Mouse IgG1 Isotype Control (CL594-65124, Clone:MOPC-21) (red), or 0.5 ug CoraLite®594 Anti-Human CD45 (HI30) (CL594-65109, Clone: HI30) (green) or unstained (blue). Cells were not fixed.