

For Research Use Only

# CoraLite®594 Anti-Mouse CD223 (C9B7W)



Catalog Number:CL594-65098

## Basic Information

<b>Catalog Number:</b> CL594-65098	<b>GenBank Accession Number:</b> BC120591	<b>Purification Method:</b> Affinity purification
<b>Size:</b> 100ug, 500 µg/ml	<b>GeneID (NCBI):</b> 16768	<b>CloneNo.:</b> C9B7W
<b>Source:</b> Rat	<b>Full Name:</b> lymphocyte-activation gene 3	<b>Excitation/Emission maxima wavelengths:</b> 588 nm / 604 nm
<b>Isotype:</b> IgG1, kappa		

## Applications

**Tested Applications:**  
FC  
**Species Specificity:**  
Mouse

## Background Information

Lymphocyte activation gene 3 protein (LAG-3), also known as CD223, is a type I transmembrane protein belonging to the immunoglobulin superfamily (PMID: 1692078). It is a CD4-related molecule that binds MHC class II with high affinity (PMID: 1692078; 9159144). LAG-3 is expressed on activated T and NK cells. Besides, natural CD4(+)CD25(+) Tregs express LAG-3 upon activation (PMID: 15485628). LAG-3 negatively regulates T-cell function and homeostasis, and contributes to the suppressor activity of Tregs (PMID: 14644131; 15485628).

## Storage

**Storage:**  
Store at 2-8°C. Avoid exposure to light. Stable for one year after shipment.  
**Storage Buffer:**  
PBS with 0.09% sodium azide.

For technical support and original validation data for this product please contact:

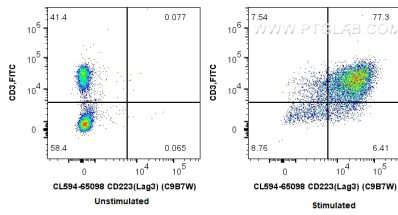
T: 4006900926

E: Proteintech-CN@ptglab.com

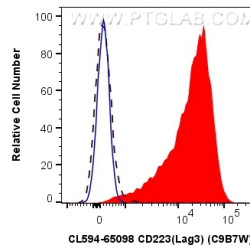
W: ptgcn.com

**This product is exclusively available under Proteintech Group brand and is not available to purchase from any other manufacturer.**

## Selected Validation Data



1X10<sup>6</sup> unstimulated or anti-CD3/CD28 stimulated (3 days) mouse splenocytes were surface co-stained with FITC Anti-Mouse CD3 and 0.5 ug CoraLite®594 Anti-Mouse CD223 (CL594-65098, Clone: C9B7W). Cells were not fixed.



1X10<sup>6</sup> unstimulated (dashed line) or anti-CD3/CD28 stimulated (3 days) mouse splenocytes were surface stained with 0.5 ug CoraLite®594 Anti-Mouse CD223 (CL594-65098, Clone: C9B7W) (red), or 0.5 ug Isotype Control (blue). Cells were not fixed.