

For Research Use Only

# CoraLite® Plus 594 Anti-Human CD20 (2H7)



Catalog Number: CL594-65085

## Basic Information

**Catalog Number:**

CL594-65085

**Size:**

100 tests, 5 µl/test

**Source:**

Mouse

**Isotype:**

IgG2b, kappa

**GenBank Accession Number:**

BC002807

**GeneID (NCBI):**

931

**Full Name:**

membrane-spanning 4-domains, subfamily A, member 1

**Calculated MW:**

297 aa, 33 kDa

**Purification Method:**

Affinity purification

**CloneNo.:**

2H7

**Excitation/Emission maxima wavelengths:**

594 nm / 615 nm

## Applications

**Tested Applications:**

FC

**Species Specificity:**

Human

## Background Information

CD20 is a 33-37 kDa transmembrane phosphoprotein belonging to the membrane-spanning 4A family (PMID: 3260267; 16785532). CD20 is a B-lymphocyte surface molecule that is widely expressed during B-cell ontogeny, from early pre-B-cell developmental stages until final differentiation into plasma cells (PMID: 7524522). CD20 functions as calcium-permeable cation channel (PMID: 7684739). It is involved in the regulation of B-cell activation, proliferation and differentiation (PMID: 7524522).

## Storage

**Storage:**

Store at 2-8°C. Avoid exposure to light. Stable for one year after shipment.

**Storage Buffer:**

PBS with 0.09% sodium azide and 0.5% BSA.

For technical support and original validation data for this product please contact:

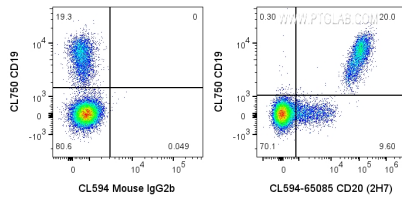
T: 4006900926

E: Proteintech-CN@ptglab.com

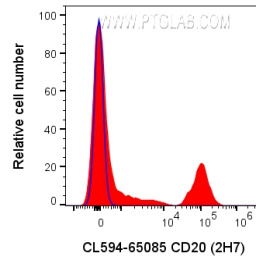
W: ptgcn.com

**This product is exclusively available under Proteintech Group brand and is not available to purchase from any other manufacturer.**

## Selected Validation Data



1X10<sup>6</sup> human PBMCs were surface stained with CL750 CD19 and 5 ul CoraLite® Plus 594 Anti-Human CD20 (CL594-65085, Clone:2H7) or CoraLite®594 Mouse IgG2b Isotype Control. Cells were not fixed. Lymphocytes were gated.



1X10<sup>6</sup> human PBMCs were surface stained with 5 ul CoraLite® Plus 594 Anti-Human CD20 (CL594-65085, Clone:2H7) or CoraLite®594 Mouse IgG2b Isotype Control. Cells were not fixed. Lymphocytes were gated.