

For Research Use Only

CoraLite®594 Anti-Mouse CD31 (390)

Catalog Number:CL594-65058



Basic Information

Catalog Number: CL594-65058	GenBank Accession Number: BC008519	Purification Method: Affinity purification
Size: 100ug, 0.5 mg/ml	GeneID (NCBI): 18613	CloneNo.: 390
Source: Rat	UNIPROT ID: Q08481	Recommended Dilutions: IF/ICC 1:50-1:500
Isotype: IgG2a, kappa	Full Name: platelet/endothelial cell adhesion molecule 1	Excitation/Emission maxima wavelengths: 588 nm / 604 nm

Applications

Tested Applications: IF/ICC, FC	Positive Controls: IF/ICC : bEnd.3 cells,
Species Specificity: mouse	

Background Information

Platelet endothelial cell adhesion molecule-1 (PECAM-1, CD31) is a member of the immunoglobulin gene superfamily of cell adhesion molecules. CD31 is a transmembrane glycoprotein that is highly expressed on the surface of the endothelium, making up a large portion of its intracellular junctions. PECAM-1 is also present on the surface of hematopoietic cells and immune cells including platelets, monocytes, neutrophils, natural killer cells, megakaryocytes and some types of T-cell (PMID: 9011572). As well as its role in cell-cell adhesion, PECAM-1 functions as a signaling receptor, and is involved in important physiological events such as nitric oxide production, regulation of T-cell immunity and tolerance, leukocyte transendothelial migration and inflammation and angiogenesis (PMID: 21183735; 20978210; 17872453; 20634489).

Storage

Storage:
Store at 2-8°C. Avoid exposure to light. Stable for one year after shipment.
Storage Buffer:
PBS with 0.1% sodium azide and 0.5% BSA, pH 7.3.

For technical support and original validation data for this product please contact:

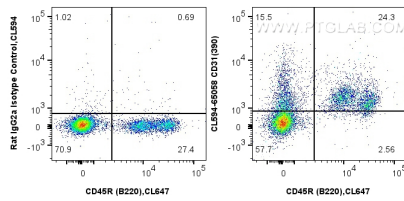
T: 4006900926

E: Proteintech-CN@ptglab.com

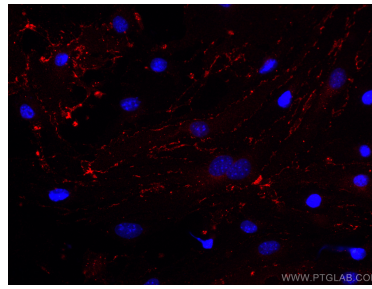
W: ptgcn.com

This product is exclusively available under Proteintech Group brand and is not available to purchase from any other manufacturer.

Selected Validation Data



1×10^6 C57BL/6 mouse bone marrow cells were surface stained with 0.5 μ g CoraLite® 594 Anti-Mouse CD31 (390) (CL594-65058, Clone: 390) or 0.5 μ g CoraLite® 594 Rat IgG2a Isotype Control (2A3) (CL594-65209, Clone: 2A3), and 0.5 μ g APC Anti-Mouse CD45R (B220) (RA3-6B2) (APC-65139, Clone: RA3-6B2). Cells were not fixed.



Immunofluorescent analysis of (4% PFA) fixed bEnd.3 cells using CoraLite® 594 CD31 antibody (CL594-65058, Clone: 390) at dilution of 1:200.