

For Research Use Only

CoraLite®594 Anti-Human CD107b / LAMP2 (H4B4)

Catalog Number:CL594-65053



Basic Information

Catalog Number:

CL594-65053

Concentration:

100tests, 5 ul/test

Source:

Mouse

Isotype:

IgG1, kappa

GenBank Accession Number:

BC002965

GeneID (NCBI):

3920

ENSEMBL Gene ID:

ENSG00000005893

UNIPROT ID:

P13473

Full Name:

lysosomal-associated membrane protein 2

Calculated MW:

45 kDa

Purification Method:

Protein G purification

CloneNo.:

H4B4

Recommended Dilutions:

IF/ICC: 1:50-1:500

FC (Intra): 5 ul per 10⁶ cells in 100 µl suspension

Excitation/Emission maxima wavelengths:

588 nm / 604 nm

Applications

Tested Applications:

IF/ICC, FC (Intra)

Species Specificity:

human

Positive Controls:

IF/ICC : HeLa cells,

FC (Intra) : Jurkat cells,

Background Information

LAMP2 (CD107b) is a Lysosomal membrane glycoprotein. LAMP2 is extensively glycosylated with asparagine-linked oligosaccharides which protect it from intracellular proteolysis (PMID: 10521503). Although LAMP-2 is localized primarily in the endosome-lysosomal membrane of cells, it is also found on the plasma membrane under certain circumstances, e.g., after platelet activation, during granulocytic differentiation and activation, and in some tumor cells (PMID: 12221139). LAMP is involved in lysosomal stability and autophagy (PMID: 12221139). This glycoprotein provides selectins with carbohydrate ligands. LAMP2 may play a role in tumor cell metastasis (PMID 9426697).

Storage

Storage:

Store at 2-8°C. Avoid exposure to light. Stable for one year after shipment.

Storage Buffer:

PBS with 0.09% sodium azide and 0.5% BSA, pH7.3

For technical support and original validation data for this product please contact:

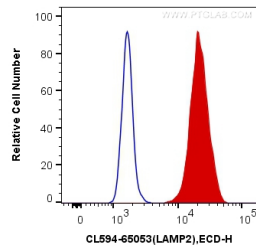
T: 4006900926

E: Proteintech-CN@ptglab.com

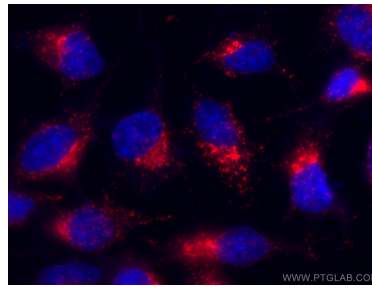
W: ptgcn.com

This product is exclusively available under Proteintech Group brand and is not available to purchase from any other manufacturer.

Selected Validation Data



1X10⁶ Jurkat cells were intracellularly stained with 5 μ l CoraLite®594 Anti-Human CD107b (CL594-65053, Clone:H4B4) (red) or Control Antibody. Cells were fixed with 4% PFA and permeabilized with Flow Cytometry Perm Buffer.



Immunofluorescent analysis of (-20°C Ethanol) fixed HeLa cells using CoraLite®594-conjugated CD107b antibody (CL594-65053, Clone: H4B4) at dilution of 1:50.