

For Research Use Only

CoraLite®594-conjugated MUM1 Monoclonal antibody



Catalog Number:CL594-60353

Basic Information

Catalog Number:

CL594-60353

Size:

1000 µg/ml

Source:

Mouse

Isotype:

IgG2a

Immunogen Catalog Number:

AG3371

GenBank Accession Number:

BC008098

GeneID (NCBI):

84939

UNIPROT ID:

Q2TAK8

Full Name:

melanoma associated antigen
(mutated) 1

Calculated MW:

18 kDa, 79 kDa

Observed MW:

78-80 kDa

Purification Method:

Protein A purification

CloneNo.:

3B1D2

Recommended Dilutions:

IF 1:50-1:500

Excitation/Emission maxima
wavelengths:

588 nm / 604 nm

Applications

Tested Applications:

IF/ICC

Species Specificity:

human

Positive Controls:

IF : HeLa cells,

Background Information

MUM1, also named as EXPAND1, is an architectural component of the chromatin, which in response to DNA damage serves as an accessory factor to promote cell survival. It is a 53BP1-associated DNA damage-responsive factor. MUM1/EXPAND1 is different to another protein IRF4/MUM1.

Storage

Storage:

Store at -20°C. Avoid exposure to light.

Storage Buffer:

PBS with 50% Glycerol, 0.05% Proclin300, 0.5% BSA, pH 7.3.

Aliquoting is unnecessary for -20°C storage

For technical support and original validation data for this product please contact:

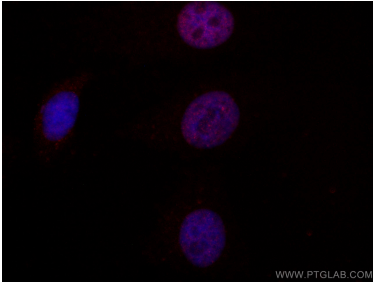
T: 4006900926

E: Proteintech-CN@ptglab.com

W: ptgcn.com

This product is exclusively available under Proteintech Group brand and is not available to purchase from any other manufacturer.

Selected Validation Data



Immunofluorescent analysis of (4% PFA) fixed HeLa cells using CoraLite®594 MUM1 antibody (CL594-60353, Clone: 3B1D2) at dilution of 1:50.