

For Research Use Only

CoraLite®594-conjugated Gastrin Monoclonal antibody



Catalog Number:CL594-60346

Basic Information

Catalog Number: CL594-60346	GenBank Accession Number: BC069724	Purification Method: Protein A purification
Size: 1000 µg/ml	GeneID (NCBI): 2520	CloneNo.: 7G9C3
Source: Mouse	UNIPROT ID: P01350	Recommended Dilutions: IF 1:50-1:500
Isotype: IgG2a	Full Name: gastrin	Excitation/Emission maxima wavelengths: 588 nm / 604 nm
Immunogen Catalog Number: AG12795	Calculated MW: 101 aa, 11 kDa	

Applications

Tested Applications: IF-P	Positive Controls: IF : human stomach cancer tissue,
Species Specificity: human	

Background Information

Gastrin is a hormone produced primarily by G-cells in the stomach, where it functions to stimulate acid secretion by gastric parietal cells. Gastrin is a promiscuous hormone. Thus, the gastrin gene is expressed in common cancers such as bronchogenic, colorectal, ovarian and pancreatic carcinomas.

Storage

Storage:
Store at -20°C. Avoid exposure to light. Stable for one year after shipment.
Storage Buffer:
PBS with 50% Glycerol, 0.05% Proclin300, 0.5% BSA, pH 7.3.
Aliquoting is unnecessary for -20°C storage

For technical support and original validation data for this product please contact:

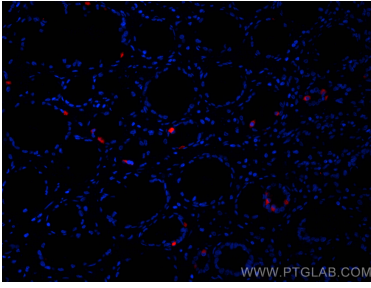
T: 4006900926

E: Proteintech-CN@ptglab.com

W: ptgcn.com

This product is exclusively available under Proteintech Group brand and is not available to purchase from any other manufacturer.

Selected Validation Data



Immunofluorescent analysis of (4% PFA) fixed paraffin-embedded human stomach cancer tissue using CoraLite®594 Gastrin antibody (CL594-60346, Clone: 7G9C3) at dilution of 1:200. Heat mediated antigen retrieval with Tris-EDTA buffer (pH 9.0).