

For Research Use Only

# CoraLite®594-conjugated Prostein Monoclonal antibody



Catalog Number:CL594-60343

## Basic Information

Catalog Number:

CL594-60343

Size:

1000 µg/ml

Source:

Mouse

Isotype:

IgG2b

Immunogen Catalog Number:

AG5463

GenBank Accession Number:

BC050416

GeneID (NCBI):

85414

UNIPROT ID:

Q96JT2

Full Name:

solute carrier family 45, member 3

Calculated MW:

59 kDa

Observed MW:

55-59 kDa

Purification Method:

Protein A purification

CloneNo.:

5E12E2

Recommended Dilutions:

IF-P 1:50-1:500

Excitation/Emission maxima

wavelengths:

588 nm / 604 nm

## Applications

Tested Applications:

IF-P

Species Specificity:

human

Positive Controls:

IF-P : human prostate cancer tissue,

## Background Information

Prostein is a prostate tissue-specific protein whose expression is highly restricted to normal and cancerous prostate tissues. Anti-prostein is useful for the identification of prostate adenocarcinomas and is a good marker to identify prostatic origin in metastatic cancer.

## Storage

Storage:

Store at -20°C. Avoid exposure to light.

Storage Buffer:

PBS with 50% Glycerol, 0.05% Proclin300, 0.5% BSA, pH 7.3.

Aliquoting is unnecessary for -20°C storage

For technical support and original validation data for this product please contact:

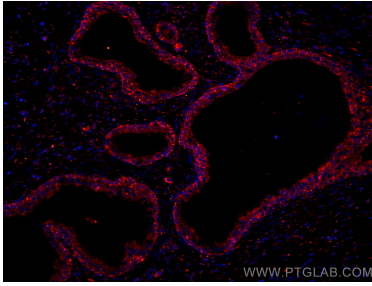
T: 4006900926

E: [Proteintech-CN@ptglab.com](mailto:Proteintech-CN@ptglab.com)

W: [ptgcn.com](http://ptgcn.com)

This product is exclusively available under Proteintech Group brand and is not available to purchase from any other manufacturer.

## Selected Validation Data



Immunofluorescent analysis of (4% PFA) fixed human prostate cancer tissue using CoraLite®594 Prostein antibody (CL594-60343, Clone: 5E12E2 ) at dilution of 1:200.