

CoraLite®594-conjugated E-cadherin Monoclonal antibody

Catalog Number: **CL594-60335****Featured Product**

Basic Information

Catalog Number:

CL594-60335

Size:

1000 µg/ml

Source:

Mouse

Isotype:

IgG2b

Immunogen Catalog Number:

AG15085

GenBank Accession Number:

BC141838

GeneID (NCBI):

999

UNIPROT ID:

P12830

Full Name:

cadherin 1, type 1, E-cadherin (epithelial)

Calculated MW:

882 aa, 97 kDa

Observed MW:

120 kDa

Purification Method:

Protein A purification

CloneNo.:

6B11F11

Recommended Dilutions:

IF-P 1:50-1:500

Excitation/Emission maxima wavelengths:

588 nm / 604 nm

Applications

Tested Applications:

IF-P

Species Specificity:

human, pig

Positive Controls:

IF-P: human breast cancer tissue,

Background Information

Cadherins are a family of transmembrane glycoproteins that mediate calcium-dependent cell-cell adhesion and play an important role in the maintenance of normal tissue architecture. E-cadherin (epithelial cadherin), also known as CDH1 (cadherin 1) or CAM 120/80, is a classical member of the cadherin superfamily which also include N-, P-, R-, and B-cadherins. E-cadherin is expressed on the cell surface in most epithelial tissues. The extracellular region of E-cadherin establishes calcium-dependent homophilic trans binding, providing specific interaction with adjacent cells, while the cytoplasmic domain is connected to the actin cytoskeleton through the interaction with p120-, α -, β -, and γ -catenin (plakoglobin). E-cadherin is important in the maintenance of the epithelial integrity, and is involved in mechanisms regulating proliferation, differentiation, and survival of epithelial cell. E-cadherin may also play a role in tumorigenesis. It is considered to be an invasion suppressor protein and its loss is an indicator of high tumor aggressiveness.

Storage

Storage:

Store at -20°C. Avoid exposure to light. Stable for one year after shipment.

Storage Buffer:

PBS with 50% Glycerol, 0.05% Proclin300, 0.5% BSA, pH 7.3.

Aliquoting is unnecessary for -20°C storage

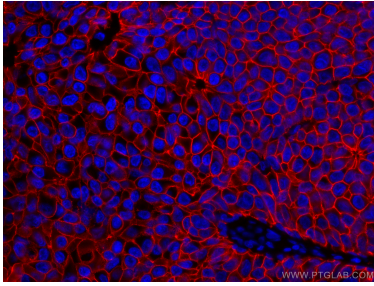
For technical support and original validation data for this product please contact:

T: 4006900926

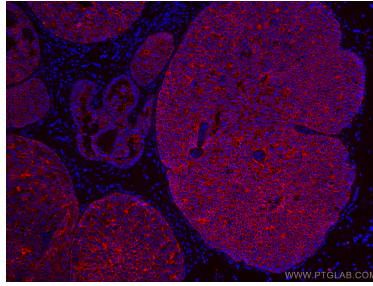
E: Proteintech-CN@ptglab.comW: ptgcn.com

This product is exclusively available under Proteintech Group brand and is not available to purchase from any other manufacturer.

Selected Validation Data



Immunofluorescent analysis of (4% PFA) fixed human breast cancer tissue using CoraLite®594 E-cadherin antibody (CL594-60335, Clone: 6B11F11) at dilution of 1:200.



Immunofluorescent analysis of (4% PFA) fixed human breast cancer tissue using CoraLite®594 E-cadherin antibody (CL594-60335, Clone: 6B11F11) at dilution of 1:200.