

CoraLite®594-conjugated VCP Monoclonal antibody

Catalog Number: CL594-60316

Featured Product

Basic Information

Catalog Number:

CL594-60316

Size:

1000 µg/ml

Source:

Mouse

Isotype:

IgG1

Immunogen Catalog Number:

AG1002

GenBank Accession Number:

BC007562

GeneID (NCBI):

7415

UNIPROT ID:

P55072

Full Name:

valosin-containing protein

Calculated MW:

89 kDa

Observed MW:

89 kDa

Purification Method:

Protein G purification

CloneNo.:

2A4B10

Recommended Dilutions:

IF/ICC 1:50-1:500

Excitation/Emission maxima wavelengths:

588 nm / 604 nm

Applications

Tested Applications:

IF/ICC

Species Specificity:

human, mouse

Positive Controls:

IF/ICC : HeLa cells,

Background Information

VCP (Valosin-containing protein), also known as TER ATPase and 15S Mg²⁺-ATPase p97 subunit, belongs to the AAA ATPase family. VCP was first identified as a result of attempts to clone a putative peptide hormone called valosin. It was found that the cloned cDNA encoded a ubiquitously expressed 90 kDa cytosolic protein, termed VCP, which showed none of the characteristics of a peptide hormone precursor (PMID:1382975). Defects in VCP are the cause of inclusion body myopathy with early-onset Paget disease and frontotemporal dementia (IBMPFD) and amyotrophic lateral sclerosis type 14 with or without frontotemporal dementia (ALS14). VCP has a calculated molecular weight of 89 kDa and an apparent molecular weight of 90-100 kDa (PMID: 15732117, 1382975).

Storage

Storage:

Store at -20°C. Avoid exposure to light. Stable for one year after shipment.

Storage Buffer:

PBS with 50% Glycerol, 0.05% Proclin300, 0.5% BSA, pH 7.3.

Aliquoting is unnecessary for -20°C storage

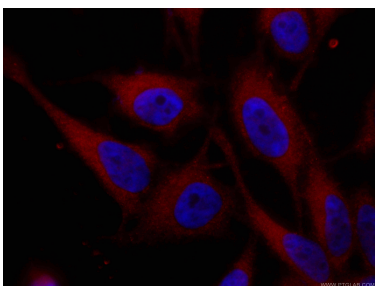
For technical support and original validation data for this product please contact:

T: 4006900926

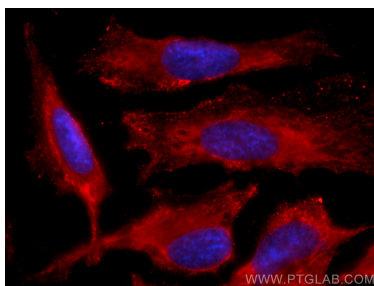
E: Proteintech-CN@ptglab.comW: ptgcn.com

This product is exclusively available under Proteintech Group brand and is not available to purchase from any other manufacturer.

Selected Validation Data



Immunofluorescent analysis of (-20°C Ethanol) fixed HeLa cells using CL594-60316 (VCP antibody) at dilution of 1:100.



Immunofluorescent analysis of (-20°C Ethanol) fixed HeLa cells using CoraLite®594 VCP antibody (CL594-60316, Clone: 2A4B10) at dilution of 1:200.