

# CoraLite®594-conjugated IL-1R2 Monoclonal antibody

Catalog Number: **CL594-60262**

## Basic Information

**Catalog Number:**

CL594-60262

**Size:**

1000 µg/ml

**Source:**

Mouse

**Isotype:**

IgG2a

**Immunogen Catalog Number:**

AG4495

**GenBank Accession Number:**

BC039031

**GeneID (NCBI):**

7850

**UNIPROT ID:**

P27930

**Full Name:**

interleukin 1 receptor, type II

**Calculated MW:**

398 aa, 45 kDa

**Observed MW:**

45 kDa

**Purification Method:**

Protein A purification

**CloneNo.:**

3H4H4

**Recommended Dilutions:**

IF/ICC 1:50-1:500

**Excitation/Emission maxima  
wavelengths:**

588 nm / 604 nm

## Applications

**Tested Applications:**

IF/ICC

**Species Specificity:**

human, mouse

**Positive Controls:**

IF/ICC : HeLa cells,

## Background Information

Interleukin-1 receptor type 2 (IL1R2, also known as CD121b) is a cytokine receptor that belongs to the interleukin 1 receptor family. It exists in both a membrane bound and soluble form. IL1R2 binds interleukin alpha (IL1A), interleukin beta (IL1B), and interleukin 1 receptor, type I (IL1R1/IL1RA), and acts as a decoy receptor that inhibits the activity of its ligands. IL1R2 serves as a negative regulator of IL-1 signaling, thereby suppressing inflammatory response.

## Storage

**Storage:**

Store at -20°C. Avoid exposure to light. Stable for one year after shipment.

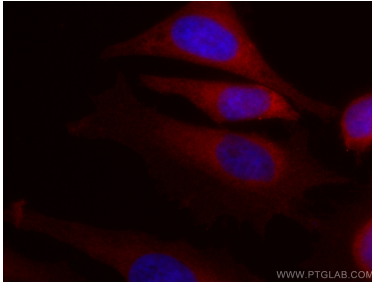
**Storage Buffer:**

PBS with 50% Glycerol, 0.05% Proclin300, 0.5% BSA, pH 7.3.

Aliquoting is unnecessary for -20°C storage

---

## Selected Validation Data



Immunofluorescent analysis of (-20°C Ethanol) fixed HeLa cells using Coralite®594-conjugated IL1R2 antibody (CL594-60262, Clone: 3H4H4 ) at dilution of 1:100.