

# CoraLite®594-conjugated Myosin Light Chain 2 Monoclonal antibody

Catalog Number: CL594-60229

## Basic Information

**Catalog Number:**

CL594-60229

**Size:**

1000 ug/ml

**Source:**

Mouse

**Isotype:**

IgG1

**Immunogen Catalog Number:**

AG1356

**GenBank Accession Number:**

BC015821

**GeneID (NCBI):**

4633

**UNIPROT ID:**

P10916

**Full Name:**

myosin, light chain 2, regulatory, cardiac, slow

**Calculated MW:**

19 kDa

**Observed MW:**

18 kDa

**Purification Method:**

Protein G purification

**CloneNo.:**

5A1F1

**Recommended Dilutions:**

IF-P 1:50-1:500

IF/ICC 1:50-1:500

**Excitation/Emission maxima wavelengths:**

588 nm / 604 nm

## Applications

**Tested Applications:**

IF/ICC, IF-P

**Species Specificity:**

human, mouse, rat, pig

**Positive Controls:**

IF-P : mouse heart tissue,

IF/ICC : C2C12 cells,

## Background Information

MYL2, also named as MLC-2v and MLC-2, is ventricular/cardiac muscle isoform. Defects in MYL2 are the cause of cardiomyopathy familial hypertrophic type 10 (CMH10). Defects in MYL2 are the cause of cardiomyopathy familial hypertrophic with mid-left ventricular chamber type 2 (MVC2). MYL2 has been widely used as a marker of mature ventricular cardiomyocytes.

## Storage

**Storage:**

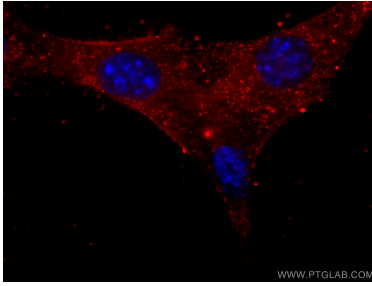
Store at -20°C. Avoid exposure to light. Stable for one year after shipment.

**Storage Buffer:**

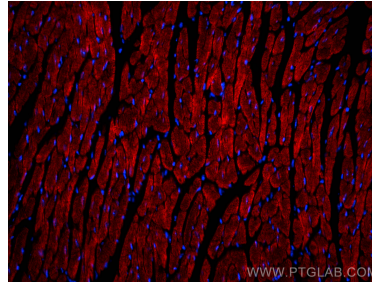
PBS with 50% Glycerol, 0.05% Proclin300, 0.5% BSA, pH 7.3.

Aliquoting is unnecessary for -20°C storage

## Selected Validation Data



Immunofluorescent analysis of (-20°C Ethanol) fixed C2C12 cells using CL594-60229 (Myosin Light Chain 2 antibody) at dilution of 1:50. .



Immunofluorescent analysis of (4% PFA) fixed paraffin-embedded mouse heart tissue using CoraLite®594 Myosin Light Chain 2 antibody (CL594-60229, Clone: 5A1F1 ) at dilution of 1:200. Heat mediated antigen retrieval with Tris-EDTA buffer (pH 9.0).