

CoraLite®594-conjugated Cytoglobin Monoclonal antibody

Catalog Number: **CL594-60228**

Basic Information

Catalog Number:

CL594-60228

Size:

1000 µg/ml

Source:

Mouse

Isotype:

IgG1

Immunogen Catalog Number:

AG4161

GenBank Accession Number:

BC029798

GeneID (NCBI):

114757

UNIPROT ID:

Q8WWM9

Full Name:

cytoglobin

Calculated MW:

190 aa, 21 kDa

Observed MW:

27-29 kDa

Purification Method:

Protein G purification

CloneNo.:

4C7E11

Excitation/Emission maxima
wavelengths:

588 nm / 604 nm

Applications

Tested Applications:

Species Specificity:

human, mouse, pig, rat

Background Information

Cytoglobin is a ubiquitously expressed hexacoordinate hemoglobin that may facilitate diffusion of oxygen through tissues. The protein, with calculated MW of 21 kDa, runs as a 29kd one in canine retina, kidney, liver, lung, and heart. It may be caused by posttranslational modification of the protein. Various immuno-staining patterns were reported including nuclear, cytoplasm and extracellular location.

Storage

Storage:

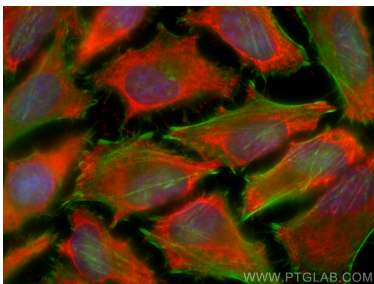
Store at -20°C. Avoid exposure to light. Stable for one year after shipment.

Storage Buffer:

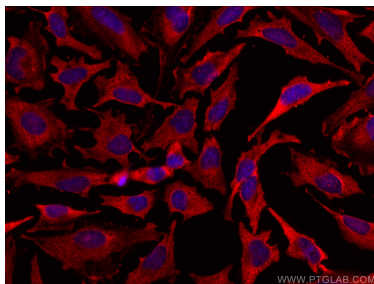
PBS with 50% Glycerol, 0.05% Proclin300, 0.5% BSA, pH 7.3.

Aliquoting is unnecessary for -20°C storage

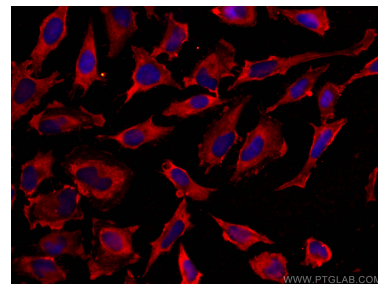
Selected Validation Data



Immunofluorescent analysis of (-20°C Ethanol) fixed HeLa cells using CoraLite®594 Cytochrome b5 antibody (CL594-60228, Clone: 4C7E11) at dilution of 1:200, CL488-Phalloidin (green).



Immunofluorescent analysis of (-20°C Methanol) fixed HeLa cells using CoraLite®594 Cytochrome b5 antibody (CL594-60228, Clone: 4C7E11) at dilution of 1:200.



Immunofluorescent analysis of (-20°C Methanol) fixed HeLa cells using CoraLite®594 Cytochrome b5 antibody (CL594-60228, Clone: 4C7E11) at dilution of 1:200.