

# CoraLite®594-conjugated Galectin-1 Monoclonal antibody

Catalog Number: CL594-60223

## Basic Information

<b>Catalog Number:</b> CL594-60223	<b>GenBank Accession Number:</b> BC020675	<b>Purification Method:</b> Protein G purification
<b>Size:</b> 1000 ug/ml	<b>GeneID (NCBI):</b> 3956	<b>CloneNo.:</b> 3G10D2
<b>Source:</b> Mouse	<b>UNIPROT ID:</b> P09382	<b>Recommended Dilutions:</b> IF-P 1:600-1:2400 IF/ICC 1:50-1:500
<b>Isotype:</b> IgG1	<b>Full Name:</b> lectin, galactoside-binding, soluble, 1	<b>Excitation/Emission maxima wavelengths:</b> 588 nm / 604 nm
<b>Immunogen Catalog Number:</b> AG2432	<b>Calculated MW:</b> 15 kDa <b>Observed MW:</b> 13 kDa	

## Applications

<b>Tested Applications:</b> IF/ICC, IF-P, FC (Intra)	<b>Positive Controls:</b>
<b>Species Specificity:</b> human	<b>IF-P :</b> human colon cancer tissue, Saos-2 cells, U2OS cells <b>IF/ICC :</b> Saos-2 cells, U2OS cells

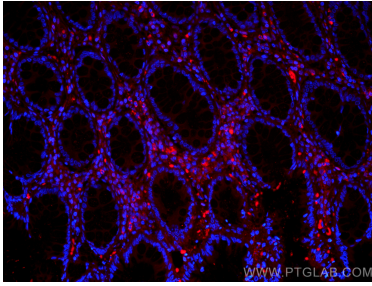
## Background Information

Galectins are a family of animal lectins defined by shared characteristic amino-acid sequences and affinity for  $\beta$ -galactose-containing oligosaccharides (PMID: 8063692). Galectin-1 contains one carbohydrate recognition domain (CRD) and occurs as a monomer as well as a non-covalent homodimer (PMID: 16840800). It is differentially expressed by various normal and pathological tissues. Galectin-1 is a multifunctional protein that is involved in cell adhesion, migration, proliferation, apoptosis, inflammation, tumour transformation and growth (PMID:15785741).

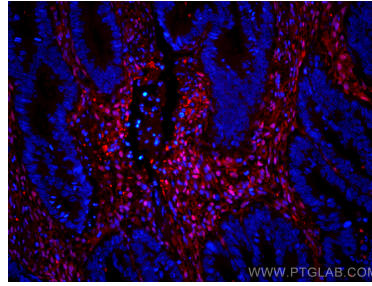
## Storage

**Storage:**  
Store at -20°C. Avoid exposure to light. Stable for one year after shipment.  
**Storage Buffer:**  
PBS with 50% Glycerol, 0.05% Proclin300, 0.5% BSA, pH 7.3.  
**Aliquoting is unnecessary for -20°C storage**

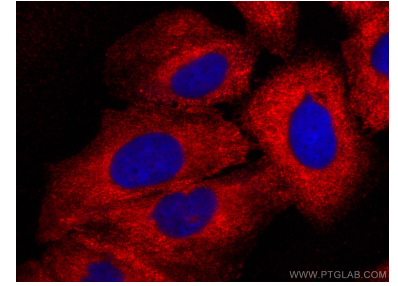
## Selected Validation Data



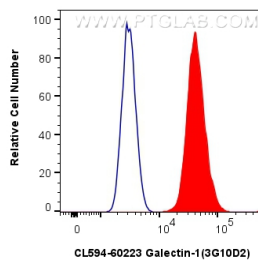
Immunofluorescent analysis of (4% PFA) fixed human colon cancer tissue using CoraLite®594 Galectin-1 antibody (CL594-60223, Clone: 3G10D2 ) at dilution of 1:1200.



Immunofluorescent analysis of (4% PFA) fixed human colon cancer tissue using CoraLite®594 Galectin-1 antibody (CL594-60223, Clone: 3G10D2 ) at dilution of 1:1200.



Immunofluorescent analysis of (-20°C Methanol) fixed Saos-2 cells using CoraLite®594 Galectin-1 antibody (CL594-60223, Clone: 3G10D2 ) at dilution of 1:200.



1x10<sup>6</sup> U2OS cells were intracellularly stained with 0.4 ug CoraLite®594-conjugated Galectin-1 Monoclonal antibody (CL594-60223, Clone:3G10D2)(red), or 0.4 ug CoraLite®594 Mouse IgG1 Isotype Control (1F8D3) (CL594-66360-1, Clone: 1F8D3) (blue). Cells were fixed with 4% PFA and permeabilized with Flow Cytometry Perm Buffer (PF00011-C).