

CoraLite®594-conjugated peroxiredoxin 2 Monoclonal antibody

Catalog Number: CL594-60202

Featured Product

Basic Information

Catalog Number:

CL594-60202

Size:

1000 µg/ml

Source:

Mouse

Isotype:

IgG1

Immunogen Catalog Number:

AG0835

GenBank Accession Number:

BC003022

GeneID (NCBI):

7001

UNIPROT ID:

P32119

Full Name:

peroxiredoxin 2

Calculated MW:

22 kDa

Observed MW:

22 kDa

Purification Method:

Protein G purification

CloneNo.:

3H6C4

Recommended Dilutions:

IF/ICC 1:50-1:500

Excitation/Emission maxima
wavelengths:

588 nm / 604 nm

Applications

Tested Applications:

IF/ICC

Species Specificity:

human, mouse

Positive Controls:

IF/ICC : MCF-7 cells,

Background Information

PRDX2, also named as TSA, PRP, NKEFB and TDPX1, belongs to the ahpC/TSA family. It is known to act as an antioxidant enzyme whose main function is H₂O₂ reduction in cells. PRDX2 is involved in redox regulation of the cell. It reduces peroxides with reducing equivalents provided through the thioredoxin system. It may play an important role in eliminating peroxides generated during metabolism. PRDX2 might participate in the signaling cascades of growth factors and tumor necrosis factor-α by regulating the intracellular concentrations of H₂O₂. PRDX2 actions may be related to the expression of NFκB and IκB. (PMID:21248284)

Storage

Storage:

Store at -20°C. Avoid exposure to light. Stable for one year after shipment.

Storage Buffer:

PBS with 50% Glycerol, 0.05% Proclin300, 0.5% BSA, pH 7.3.

Aliquoting is unnecessary for -20°C storage

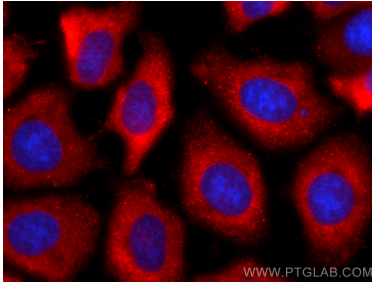
For technical support and original validation data for this product please contact:

T: 4006900926

E: Proteintech-CN@ptglab.comW: ptgcn.com

This product is exclusively available under Proteintech Group brand and is not available to purchase from any other manufacturer.

Selected Validation Data



Immunofluorescent analysis of (-20°C Methanol) fixed MCF-7 cells using CoraLite®594 peroxiredoxin 2 antibody (CL594-60202, Clone: 3H6C4) at dilution of 1:200.