

# CoraLite®594-conjugated CD34 Monoclonal antibody

Catalog Number: **CL594-60180**

## Basic Information

**Catalog Number:**

CL594-60180

**Size:**

1000 µg/ml

**Source:**

Mouse

**Isotype:**

IgG2b

**Immunogen Catalog Number:**

AG5996

**GenBank Accession Number:**

BC039146

**GeneID (NCBI):**

947

**UNIPROT ID:**

P28906

**Full Name:**

CD34 molecule

**Calculated MW:**

41 kDa

**Purification Method:**

Protein A purification

**CloneNo.:**

3C8G12

**Recommended Dilutions:**

IF-P 1:50-1:500

**Excitation/Emission maxima wavelengths:**

588 nm / 604 nm

## Applications

**Tested Applications:**

IF-P

**Species Specificity:**

human

**Positive Controls:**

IF-P : human liver cancer tissue, human tonsillitis tissue, human placenta tissue

## Background Information

CD34 is a 105- to 120-kDa glycoprophosphoprotein expressed on the majority of hematopoietic stem/progenitor cells, bone marrow stromal cells, capillary endothelial cells, embryonic fibroblasts, and some nerve tissue. CD34 is a commonly used marker for identifying human hematopoietic stem/progenitor cells and mediates cell adhesion and lymphocyte homing by binding L-selectin and E-selectin ligands. CD34 is also one of the best negative selection markers for characterizing and/or isolating human MSCs from bone marrow and other sources. Along with other positive selection markers (such as CD29, CD44, CD90, CD105 and CD166), negative selection markers (such as CD34 and CD45) are used for MSC identification.

## Storage

**Storage:**

Store at -20°C. Avoid exposure to light. Stable for one year after shipment.

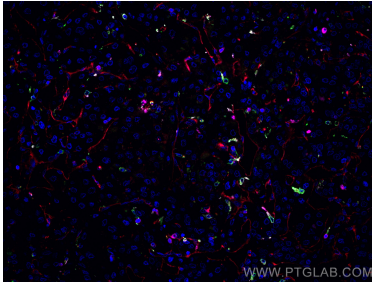
**Storage Buffer:**

PBS with 50% Glycerol, 0.05% Proclin300, 0.5% BSA, pH 7.3.

Aliquoting is unnecessary for -20°C storage

---

## Selected Validation Data



Immunofluorescent analysis of (4% PFA) fixed human liver cancer tissue using CoraLite®594 CD34 antibody (CL594-60180, Clone: 3C8G12 ) at dilution of 1:100, CoraLite® Plus 647 CD3 antibody (CL647-60181, Clone: 3F3A1, Magenta), CoraLite® Plus 488 CD163 antibody (CL488-16646, green).