

For Research Use Only

CoraLite®594-conjugated ACPP Monoclonal antibody



Catalog Number:CL594-60176

Basic Information

Catalog Number:

CL594-60176

Size:

1000 µg/ml

Source:

Mouse

Isotype:

IgG2a

Immunogen Catalog Number:

AG8578

GenBank Accession Number:

BC007460

GeneID (NCBI):

55

UNIPROT ID:

P15309

Full Name:

acid phosphatase, prostate

Calculated MW:

418 aa, 48 kDa

Observed MW:

45-50 kDa

Purification Method:

Protein A purification

CloneNo.:

1G2C9

Recommended Dilutions:

IF-P 1:50-1:500

Excitation/Emission maxima
wavelengths:

588 nm / 604 nm

Applications

Tested Applications:

IF-P

Species Specificity:

human, rat

Positive Controls:

IF-P : human prostate cancer tissue,

Background Information

ACPP is also named as PAP(prostatic acid phosphatase),5'-nucleotidase,thiamine monophosphatas and Belongs to the histidine acid phosphatase family.This enzyme is a homodimeric glycoprotein with a subunit molecular mass of 50 kDa and is an androgen-stimulated secretory product of the human prostate gland(PMID:8132635).It is also a non-specific phosphatase and has been implicated in the progression of prostate cancer, which inactivates LPA in human seminal plasma(PMID:15280042). This protein has three glycosylation sites(PMID:10639192;12525165).

Storage

Storage:

Store at -20°C. Avoid exposure to light.

Storage Buffer:

PBS with 50% Glycerol, 0.05% Proclin300, 0.5% BSA, pH 7.3.

Aliquoting is unnecessary for -20°C storage

For technical support and original validation data for this product please contact:

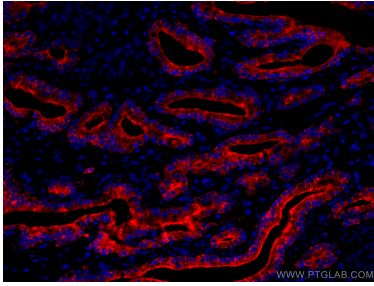
T: 4006900926

E: Proteintech-CN@ptglab.com

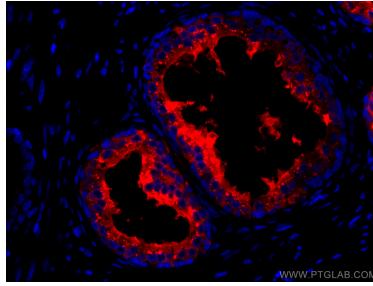
W: ptgcn.com

This product is exclusively available under Proteintech Group brand and is not available to purchase from any other manufacturer.

Selected Validation Data



Immunofluorescent analysis of (4% PFA) fixed human prostate cancer tissue using CoraLite®594 ACPP antibody (CL594-60176, Clone: 1G2C9) at dilution of 1:200.



Immunofluorescent analysis of (4% PFA) fixed human prostate cancer tissue using CoraLite®594 ACPP antibody (CL594-60176, Clone: 1G2C9) at dilution of 1:200.