

For Research Use Only

CoraLite®594-conjugated B23/NPM1 Monoclonal antibody



Catalog Number:CL594-60096

Featured Product

1 Publications

Basic Information

Catalog Number:

CL594-60096

Size:

500 µg/ml

Source:

Mouse

Isotype:

IgG1

Immunogen Catalog Number:

AG7415

GenBank Accession Number:

BC002398

GeneID (NCBI):

4869

UNIPROT ID:

P06748

Full Name:

nucleophosmin (nucleolar
phosphoprotein B23, numatrin)

Calculated MW:

33 kDa

Purification Method:

Protein G purification

CloneNo.:

4F12A3

Recommended Dilutions:

IF/ICC 1:50-1:500

Excitation/Emission maxima
wavelengths:

588 nm / 604 nm

Applications

Tested Applications:

IF/ICC

Cited Applications:

IF

Species Specificity:

human, mouse, rat

Positive Controls:

IF/ICC : HepG2 cells,

Background Information

Nucleophosmin (NPM1,B23) is a putative ribosome assembly factor with a high affinity for peptides containing nuclear localization signals (NLSs). The transport of proteins across the nuclear envelope is a selective, multistep process involving several cytoplasmic factors. Proteins must be recognized as import substrates, dock at the nuclear pore complex and translocate across the nuclear envelope in an ATP-dependent fashion. Several cytosolic and nuclear proteins that are central to this process have been identified. The 38 kDa nuclear protein nucleophosmin is involved in ribosomal assembly and rRNA transport. It is an abundant protein that is highly phosphorylated by Cdc2 kinase during mitosis.

Notable Publications

| Author | Pubmed ID | Journal | Application |
|------------|-----------|-----------------|-------------|
| Meilin Xue | 38302992 | J Hematol Oncol | IF |

Storage

Storage:

Store at -20°C. Avoid exposure to light. Stable for one year after shipment.

Storage Buffer:

PBS with 50% Glycerol, 0.05% Proclin300, 0.5% BSA, pH 7.3.

Aliquoting is unnecessary for -20°C storage

For technical support and original validation data for this product please contact:

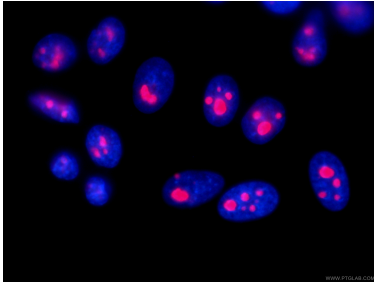
T: 4006900926

E: Proteintech-CN@ptglab.com

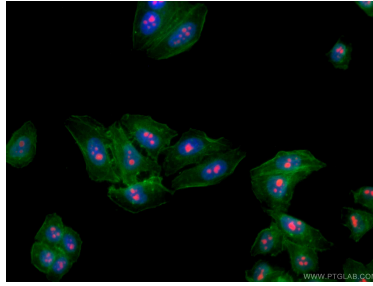
W: ptgcn.com

This product is exclusively available under Proteintech Group brand and is not available to purchase from any other manufacturer.

Selected Validation Data



Immunofluorescent analysis of (4% PFA) fixed HepG2 cells using CL594-60096 (B23/NPM1 antibody) at dilution of 1:100.



Immunofluorescent analysis of (4% PFA) fixed HepG2 cells using the CoraLite®594-conjugated version of this antibody, CL594-60096 (B23/NPM1 antibody), at dilution of 1:100. F-actin is stained using CL488-phalloidin (Green) and DNA is stained by DAPI (blue).