

For Research Use Only

CoraLite®594-conjugated ITM2C Monoclonal antibody



Catalog Number:CL594-60095

Basic Information

Catalog Number: CL594-60095	GenBank Accession Number: BC025742	Purification Method: Protein A purification
Size: 1000 µg/ml	GeneID (NCBI): 81618	CloneNo.: 2E8G11
Source: Mouse	UNIPROT ID: Q9NQX7	Recommended Dilutions: IF 1:50-1:500
Isotype: IgG2a	Full Name: integral membrane protein 2C	Excitation/Emission maxima wavelengths: 588 nm / 604 nm
Immunogen Catalog Number: AG4409	Calculated MW: 230aa,26 kDa; 267aa,30 kDa	
	Observed MW: 35 kDa	

Applications

Tested Applications: IF/ICC	Positive Controls: IF : MDCK cells, HepG2 cells
Species Specificity: human, canine	

Background Information

The Integral membrane protein 2C (ITM2C) is a type II integral transmembrane protein belonging to a family composed of at least two other members, ITM2A and ITM2B. ITM2C, often called transmembrane protein BRI3, is highly expressed in brain tissue. Yeast two-hybrid screen system revealed that BRI3 could interact with beta-secretase beta-amyloid protein converting enzyme (BACE)1 and the microtubule-destabilizing protein SCG10 (STMN2). It may play a role in TNF-induced cell death and neuronal differentiation. BRI3 was found to inhibit the various processing of amyloid precursor protein (APP) by blocking the access of alpha- and beta-secretases to APP, competitive inhibition of APP processing by BRI3 may provide a new approach to Alzheimer disease (AD) therapy and prevention.

Storage

Storage:
Store at -20°C. Avoid exposure to light. Stable for one year after shipment.
Storage Buffer:
PBS with 50% Glycerol, 0.05% Proclin300, 0.5% BSA, pH 7.3.
Aliquoting is unnecessary for -20°C storage

For technical support and original validation data for this product please contact:

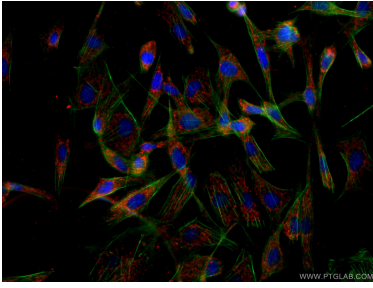
T: 4006900926

E: Proteintech-CN@ptglab.com

W: ptgcn.com

This product is exclusively available under Proteintech Group brand and is not available to purchase from any other manufacturer.

Selected Validation Data



Immunofluorescent analysis of (-20°C Ethanol) fixed MDCK cells using the Coralite®594-conjugated version of this antibody, CL594-60095 (ITM2C antibody), at dilution of 1:100.