

For Research Use Only

# CoraLite®594-conjugated EEF1D Monoclonal antibody



Catalog Number:CL594-60085

## Basic Information

**Catalog Number:**

CL594-60085

**Size:**

1000 µg/ml

**Source:**

Mouse

**Isotype:**

IgG1

**Immunogen Catalog Number:**

AG0983

**GenBank Accession Number:**

BC007847

**GeneID (NCBI):**

1936

**UNIPROT ID:**

P29692

**Full Name:**

eukaryotic translation elongation factor 1 delta (guanine nucleotide exchange protein)

**Calculated MW:**

31 kDa

**Observed MW:**

35-40 kDa

**Purification Method:**

Protein G purification

**CloneNo.:**

3B1B11

**Recommended Dilutions:**

IF 1:50-1:500

**Excitation/Emission maxima wavelengths:**

588 nm / 604 nm

## Applications

**Tested Applications:**

FC (Intra), IF/ICC

**Species Specificity:**

human, mouse, rat

**Positive Controls:**

IF : HeLa cells,

## Background Information

EEF1D, also named as EF1D and EF 1 delta, belongs to the EF-1-beta/EF-1-delta family. It is a subunit of the elongation factor-1 complex, which is responsible for the enzymatic delivery of aminoacyl tRNAs to the ribosome. EF-1-beta and EF-1-delta stimulate the exchange of GDP bound to EF-1-alpha to GTP. EEF1D is phosphorylated upon DNA damage, probably by ATM or ATR. The calculated molecular weight of EEF1D is a 31 kDa, but the modified protein is about 35-40 kDa. ( PMID: 21936567 )

## Storage

**Storage:**

Store at -20°C. Avoid exposure to light. Stable for one year after shipment.

**Storage Buffer:**

PBS with 50% Glycerol, 0.05% Proclin300, 0.5% BSA, pH 7.3.

Aliquoting is unnecessary for -20°C storage

For technical support and original validation data for this product please contact:

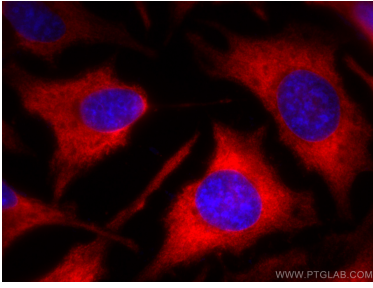
T: 4006900926

E: Proteintech-CN@ptglab.com

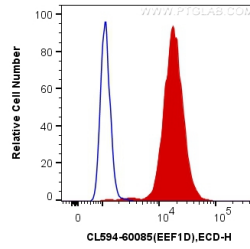
W: ptgcn.com

This product is exclusively available under Proteintech Group brand and is not available to purchase from any other manufacturer.

## Selected Validation Data



Immunofluorescent analysis of (-20°C Methanol) fixed HeLa cells using CoraLite®594 EEF1D antibody (CL594-60085, Clone: 3B1B11) at dilution of 1:200.



1X10<sup>6</sup> MCF-7 cells were intracellularly stained with 0.4 ug CoraLite®594 Anti-Human EEF1D (CL594-60085, Clone:3B1B11) (red), or 0.4 ug Control Antibody. Cells were fixed with 4% PFA and permeabilized with Flow Cytometry Perm Buffer (PF00011-C).