

For Research Use Only

CoraLite®594-conjugated IFITM1-Specific Monoclonal antibody

Catalog Number: CL594-60074

Featured Product



Basic Information

Catalog Number:

CL594-60074

Size:

1000 ug/ml

Source:

Mouse

Isotype:

IgG2a

Immunogen Catalog Number:

AG2320

GenBank Accession Number:

BC000897

GeneID (NCBI):

8519

Full Name:

interferon induced transmembrane protein 1 (9-27)

Calculated MW:

14 kDa

Observed MW:

14 kDa, 17 kDa

Purification Method:

Protein A purification

CloneNo.:

5B5E2

Recommended Dilutions:

IF/ICC 1:50-1:500

Excitation/Emission maxima wavelengths:

588 nm / 604 nm

Applications

Tested Applications:

IF/ICC

Species Specificity:

human

Positive Controls:

IF/ICC : K-562 cells,

Background Information

IFITM1(interferon induced transmembrane protein), also named DSPA2a and interferon-induced protein 17 (IFI17), belongs to the CD225 family. It has two transmembrane domain and serves as an IFN-induced antiviral protein that mediates cellular innate immunity to at least three major human pathogens, influenza A H1N1 virus, West Nile virus (WNV), and dengue virus, by inhibiting the early steps of replication. IFITM proteins are recently identified as viral restriction factors that inhibit infection mediated by the influenza A virus (IAV) hemagglutinin (HA) protein. Also they serve as important components of the innate immune system to restrict HIV-1 infection. 60074-1-Ig is a mouse monoclonal antibody which specifically recognizing IFITM1 but not IFITM2 or IFITM3.

Storage

Storage:

Store at -20°C. Avoid exposure to light. Stable for one year after shipment.

Storage Buffer:

PBS with 50% Glycerol, 0.05% Proclin300, 0.5% BSA, pH 7.3.

Aliquoting is unnecessary for -20°C storage

For technical support and original validation data for this product please contact:

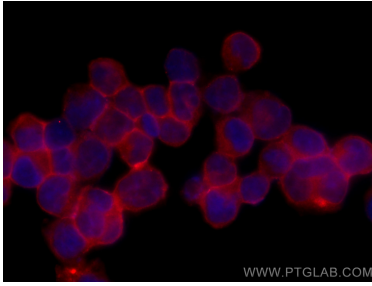
T: 4006900926

E: Proteintech-CN@ptglab.com

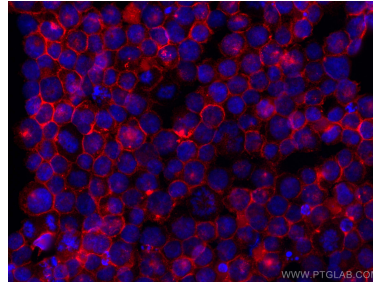
W: ptgcn.com

This product is exclusively available under Proteintech Group brand and is not available to purchase from any other manufacturer.

Selected Validation Data



Immunofluorescent analysis of (4% PFA) fixed K-562 cells using CoraLite®594 IFITM1-Specific antibody (CL594-60074, Clone: 5B5E2) at dilution of 1:200.



Immunofluorescent analysis of (4% PFA) fixed K-562 cells using CoraLite®594 IFITM1-Specific antibody (CL594-60074, Clone: 5B5E2) at dilution of 1:200.