

For Research Use Only

# CoraLite®594-conjugated Syntaxin 6 Monoclonal antibody



Catalog Number: **CL594-60059**

## Basic Information

Catalog Number: CL594-60059	GenBank Accession Number: BC009944	Purification Method: Protein G purification
Size: 1000 µg/ml	GeneID (NCBI): 10228	CloneNo.: 2B6G4
Source: Mouse	UNIPROT ID: O43752	Recommended Dilutions: IF/ICC 1:50-1:500
Isotype: IgG1	Full Name: syntaxin 6	Excitation/Emission maxima wavelengths: 588 nm / 604 nm
Immunogen Catalog Number: AG1284	Calculated MW: 29 kDa	

## Applications

Tested Applications: IF/ICC	Positive Controls: IF/ICC : PC-12 cells,
Species Specificity: human, mouse, rat	

## Background Information

Syntaxin-6 (STX6) is a SNARE protein located in the trans-Golgi network (TGN) and endosomes. It associates with a variety of SNARE proteins and is involved in intracellular vesicle trafficking. STX6 is required for sorting proteins from endosomes toward either the TGN or lysosomes.

## Storage

**Storage:**  
Store at -20°C. Avoid exposure to light. Stable for one year after shipment.  
**Storage Buffer:**  
PBS with 50% Glycerol, 0.05% Proclin300, 0.5% BSA, pH 7.3.  
**Aliquoting is unnecessary for -20°C storage**

For technical support and original validation data for this product please contact:

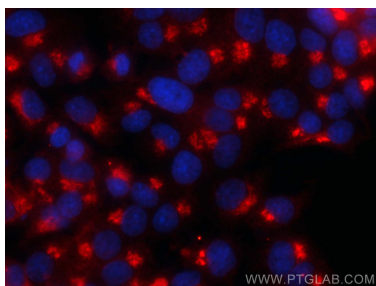
T: 4006900926

E: [Proteintech-CN@ptglab.com](mailto:Proteintech-CN@ptglab.com)

W: [ptgcn.com](http://ptgcn.com)

**This product is exclusively available under Proteintech Group brand and is not available to purchase from any other manufacturer.**

## Selected Validation Data



Immunofluorescent analysis of (4% PFA) fixed PC-12 cells using CoraLite®594 Syntaxin 6 antibody (CL594-60059, Clone: 2B6G4 ) at dilution of 1:200.