

For Research Use Only

CoraLite®594-conjugated EMILIN1 Monoclonal antibody



Catalog Number:CL594-60047

Basic Information

Catalog Number: CL594-60047	GenBank Accession Number: BC007530	Purification Method: Protein G purification
Size: 1000 µg/ml	GeneID (NCBI): 11117	CloneNo.: 2A5C8
Source: Mouse	UNIPROT ID: Q9Y6C2	Recommended Dilutions: IF-P 1:50-1:500
Isotype: IgG1	Full Name: elastin microfibril interfacier 1	Excitation/Emission maxima wavelengths: 588 nm / 604 nm
Immunogen Catalog Number: AG1016	Calculated MW: 107 kDa	
	Observed MW: 120-130 kDa	

Applications

Tested Applications: IF-P	Positive Controls: IF-P : human ovary tumor tissue,
Species Specificity: human	

Background Information

EMILIN1, also named as EMILIN, EMILIN-1, gp115 and EMI, may be responsible for anchoring smooth muscle cells to elastic fibers, and may be involved not only in the formation of the elastic fiber, but also in the processes that regulate vessel assembly. It has cell adhesive capacity. EMILIN1 is a negative regulator of the transforming growth factor-beta (TGF-beta) signaling, which is involved in blood pressure (BP) homeostasis (PMID:20186130). EMILIN1 may play a key role in hypertensive vascular remodeling. TGF β proteins are the main regulators of blood vessel development and maintenance, and EMILIN1 inhibits TGF β signaling by binding specifically to the proTGF β precursor and preventing its maturation by furin convertases in the extracellular space (PMID:19922630).

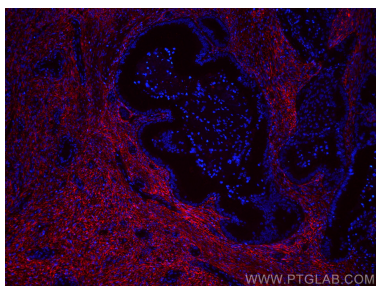
Storage

Storage:
Store at -20°C. Avoid exposure to light.
Storage Buffer:
PBS with 50% Glycerol, 0.05% Proclin300, 0.5% BSA, pH 7.3.
Aliquoting is unnecessary for -20°C storage

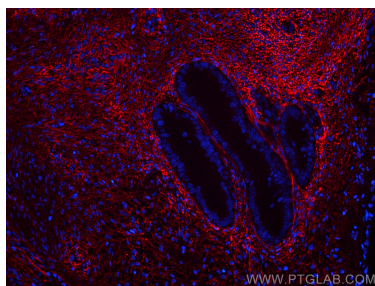
For technical support and original validation data for this product please contact:
T: 4006900926 E: Proteintech-CN@ptglab.com W: ptgcn.com

This product is exclusively available under Proteintech Group brand and is not available to purchase from any other manufacturer.

Selected Validation Data



Immunofluorescent analysis of (4% PFA) fixed human ovary tumor tissue using CoraLite®594 EMILIN1 antibody (CL594-60047, Clone: 2A5C8) at dilution of 1:200.



Immunofluorescent analysis of (4% PFA) fixed human ovary tumor tissue using CoraLite®594 EMILIN1 antibody (CL594-60047, Clone: 2A5C8) at dilution of 1:200.