

For Research Use Only

CoraLite®594-conjugated KMO Monoclonal antibody



Catalog Number:CL594-60029

Basic Information

Catalog Number:

CL594-60029

Size:

1000 µg/ml

Source:

Mouse

Isotype:

IgG1

Immunogen Catalog Number:

AG1109

GenBank Accession Number:

BC005297

GeneID (NCBI):

8564

UNIPROT ID:

O15229

Full Name:

kynurenine 3-monooxygenase
(kynurenine 3-hydroxylase)

Calculated MW:

486 aa, 56 kDa

Observed MW:

56 kDa

Purification Method:

Protein G purification

CloneNo.:

2D2F2

Recommended Dilutions:

IF/ICC 1:50-1:500

Excitation/Emission maxima
wavelengths:

588 nm / 604 nm

Applications

Tested Applications:

IF/ICC

Species Specificity:

human, mouse, rat

Positive Controls:

IF/ICC : C6 cells,

Background Information

KMO(Kynurenine 3-monooxygenase) is a membrane protein located on the outer membrane of mitochondria. Tissue distribution studies have revealed that, in rats, highest enzyme activity is found in kidney and liver, with brain having the least activity in comparison to peripheral organs(PMID: 9237672).

Storage

Storage:

Store at -20°C. Avoid exposure to light. Stable for one year after shipment.

Storage Buffer:

PBS with 50% Glycerol, 0.05% Proclin300, 0.5% BSA, pH 7.3.

Aliquoting is unnecessary for -20°C storage

For technical support and original validation data for this product please contact:

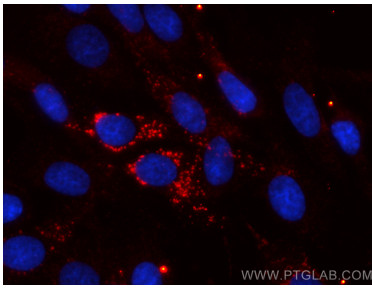
T: 4006900926

E: Proteintech-CN@ptglab.com

W: ptgcn.com

This product is exclusively available under Proteintech Group brand and is not available to purchase from any other manufacturer.

Selected Validation Data



Immunofluorescent analysis of (4% PFA) fixed C6 cells using CoraLite® 594 KMO antibody (CL594-60029, Clone: 2D2F2) at dilution of 1:200.