

For Research Use Only

CoraLite® Plus 594-conjugated WFS1 Polyclonal antibody

Catalog Number: CL594-26995

Featured Product



Basic Information

Catalog Number:

CL594-26995

Size:

1000 ug/ml

Source:

Rabbit

Isotype:

IgG

Immunogen Catalog Number:

AG25724

GenBank Accession Number:

BC030130

GeneID (NCBI):

7466

UNIPROT ID:

O76024

Full Name:

Wolfram syndrome 1 (wolframin)

Calculated MW:

890 aa, 100 kDa

Purification Method:

Antigen affinity purification

Recommended Dilutions:

IF-P 1:50-1:500

Excitation/Emission maxima wavelengths:

594 nm / 615 nm

Applications

Tested Applications:

IF-P

Species Specificity:

human, mouse, rat

Positive Controls:

IF-P : rat brain tissue, mouse brain tissue

Background Information

Wolfram syndrome protein (WFS1), also called wolframin, is a transmembrane protein, which is located primarily in the endoplasmic reticulum and its expression is induced in response to ER stress, partially through transcriptional activation. ER localization suggests that WFS1 protein has physiological functions in membrane trafficking, secretion, processing and/or regulation of ER calcium homeostasis. It is ubiquitously expressed with highest levels in brain, pancreas, heart, and insulinoma beta-cell lines. Mutations of the WFS1 gene are responsible for two hereditary diseases, autosomal recessive Wolfram syndrome and autosomal dominant low frequency sensorineural hearing loss.

Storage

Storage:

Store at -20°C. Avoid exposure to light. Stable for one year after shipment.

Storage Buffer:

PBS with 50% Glycerol, 0.05% Proclin300, 0.5% BSA, pH 7.3.

Aliquoting is unnecessary for -20°C storage

For technical support and original validation data for this product please contact:

T: 4006900926

E: Proteintech-CN@ptglab.com

W: ptgcn.com

This product is exclusively available under Proteintech Group brand and is not available to purchase from any other manufacturer.

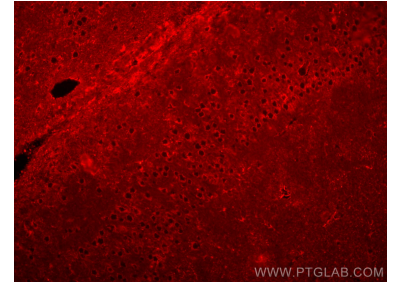
Selected Validation Data



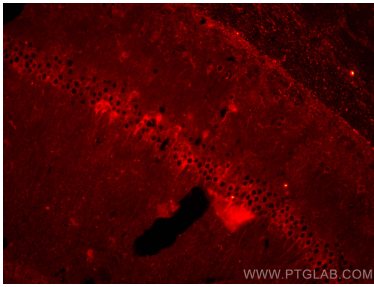
Immunofluorescent analysis of (4% PFA) fixed paraffin-embedded rat brain tissue using CoraLite® Plus 594 WFS1 antibody (CL594-26995) at dilution of 1:200. Heat mediated antigen retrieval with Tris-EDTA buffer (pH 9.0).



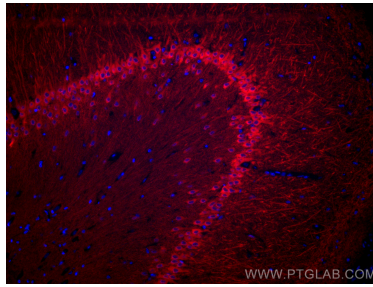
Immunofluorescent analysis of (4% PFA) fixed paraffin-embedded rat brain tissue using CoraLite® Plus 594 WFS1 antibody (CL594-26995) at dilution of 1:200. Heat mediated antigen retrieval with Tris-EDTA buffer (pH 9.0).



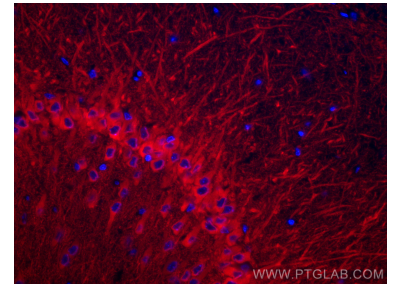
Immunofluorescent analysis of (4% PFA) fixed mouse brain tissue using CoraLite® Plus 594 WFS1 antibody (CL594-26995) at dilution of 1:200.



Immunofluorescent analysis of (4% PFA) fixed mouse brain tissue using CoraLite® Plus 594 WFS1 antibody (CL594-26995) at dilution of 1:200.



Immunofluorescent analysis of (4% PFA) fixed paraffin-embedded rat brain tissue using CoraLite® Plus 594 WFS1 antibody (CL594-26995) at dilution of 1:200. Heat mediated antigen retrieval with Tris-EDTA buffer (pH 9.0).



Immunofluorescent analysis of (4% PFA) fixed paraffin-embedded rat brain tissue using CoraLite® Plus 594 WFS1 antibody (CL594-26995) at dilution of 1:200. Heat mediated antigen retrieval with Tris-EDTA buffer (pH 9.0).