

# CoraLite®594-conjugated ATOH1 Polyclonal antibody

Catalog Number: **CL594-21215**

## Basic Information

**Catalog Number:**

CL594-21215

**Size:**

1000 µg/ml

**Source:**

Rabbit

**Isotype:**

IgG

**Immunogen Catalog Number:**

AG15615

**GenBank Accession Number:**

BC069594

**GeneID (NCBI):**

474

**UNIPROT ID:**

Q92858

**Full Name:**

atonal homolog 1 (Drosophila)

**Calculated MW:**

354 aa, 38 kDa

**Observed MW:**

38-40 kDa

**Purification Method:**

Antigen affinity purification

**Excitation/Emission maxima wavelengths:**

588 nm / 604 nm

## Applications

**Tested Applications:**

FC (Intra)

**Species Specificity:**

human, mouse, rat

## Background Information

ATOH1, also named as Protein atonal homolog 1 or BHLHA14, is a 364 amino acid protein, which contains 1 bHLH (basic helix-loop-helix) domain. ATOH1, as a transcriptional regulator in the nucleus activates E box-dependent transcription in collaboration with TCF3/E47, but the activity is completely antagonized by the negative regulator of neurogenesis HES1. ATOH1 plays a role in the differentiation of subsets of neural cells by activating E box-dependent transcription.

## Storage

**Storage:**

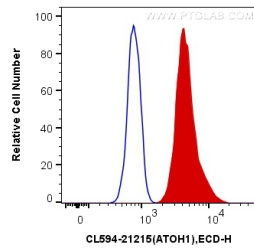
Store at -20°C. Avoid exposure to light.

**Storage Buffer:**

PBS with 50% Glycerol, 0.05% Proclin300, 0.5% BSA, pH 7.3.

Aliquoting is unnecessary for -20°C storage

## Selected Validation Data



1X10<sup>6</sup> HepG2 cells were intracellularly stained with 0.4 ug CoraLite® 594 Anti-Human ATOH1 (CL594-21215) (red), or 0.4 ug Control Antibody. Cells were fixed and permeabilized with Transcription Factor Staining Buffer Kit (PF00011).